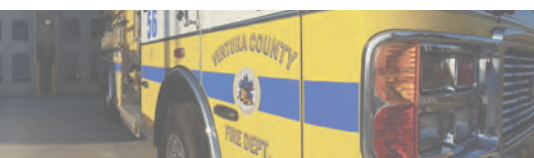


County of Ventura  
Board of Supervisors Hearing  
September 15, 2020  
Case No. PL17-0141

**Exhibit 22.d**

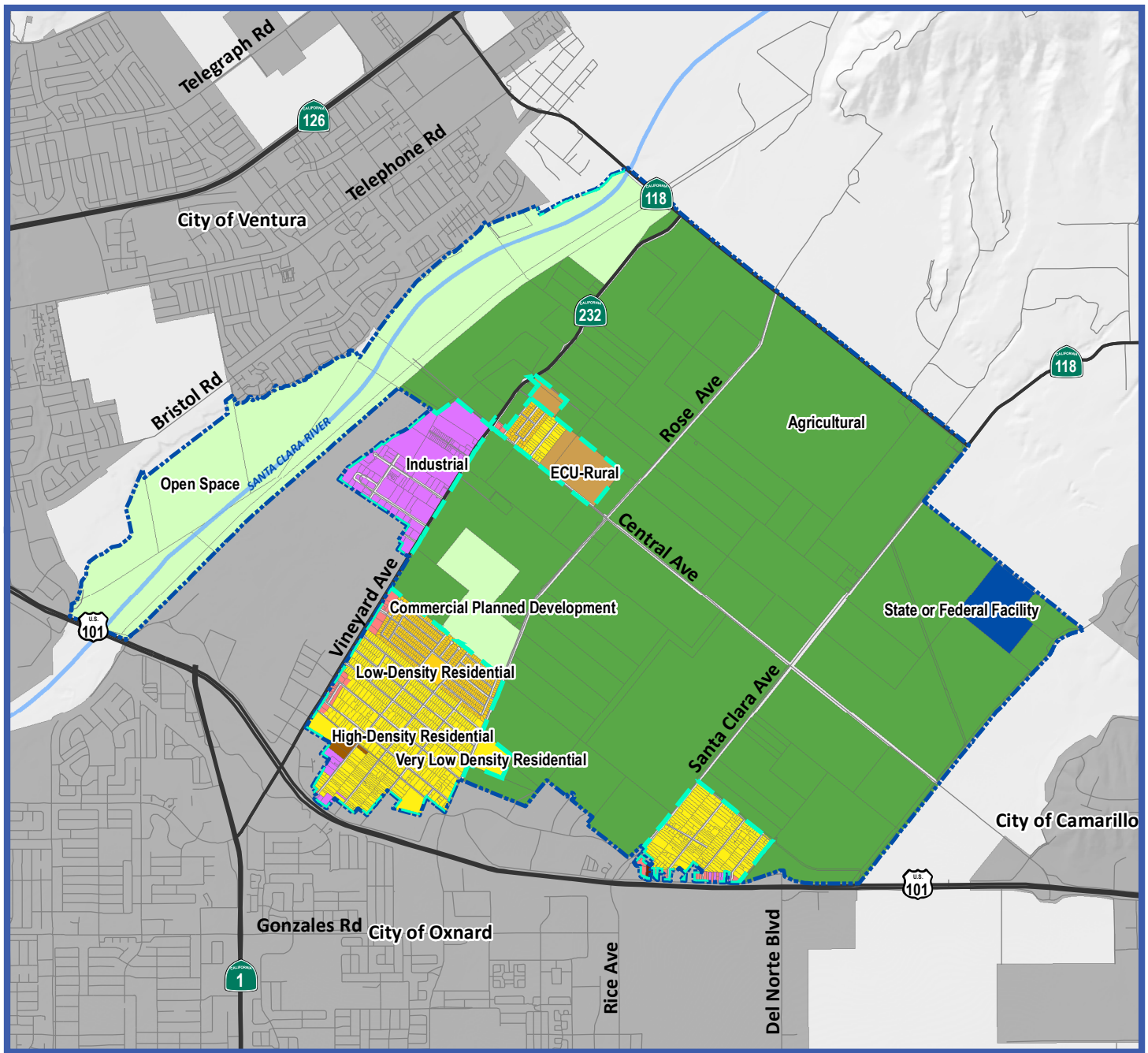
**2040 General Plan, Appendix A**

A



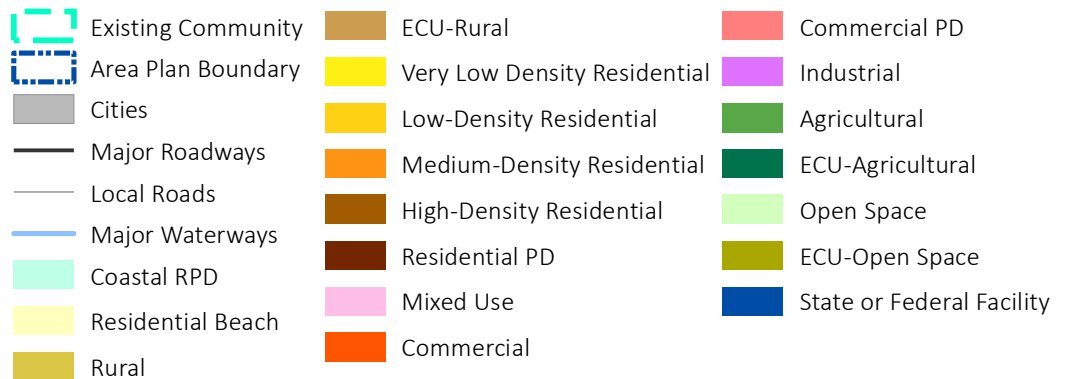
*Please see the next page.*





**Figure A-1:**  
General Plan  
Land Use Diagram -  
El Rio/Del Norte  
Area Plan

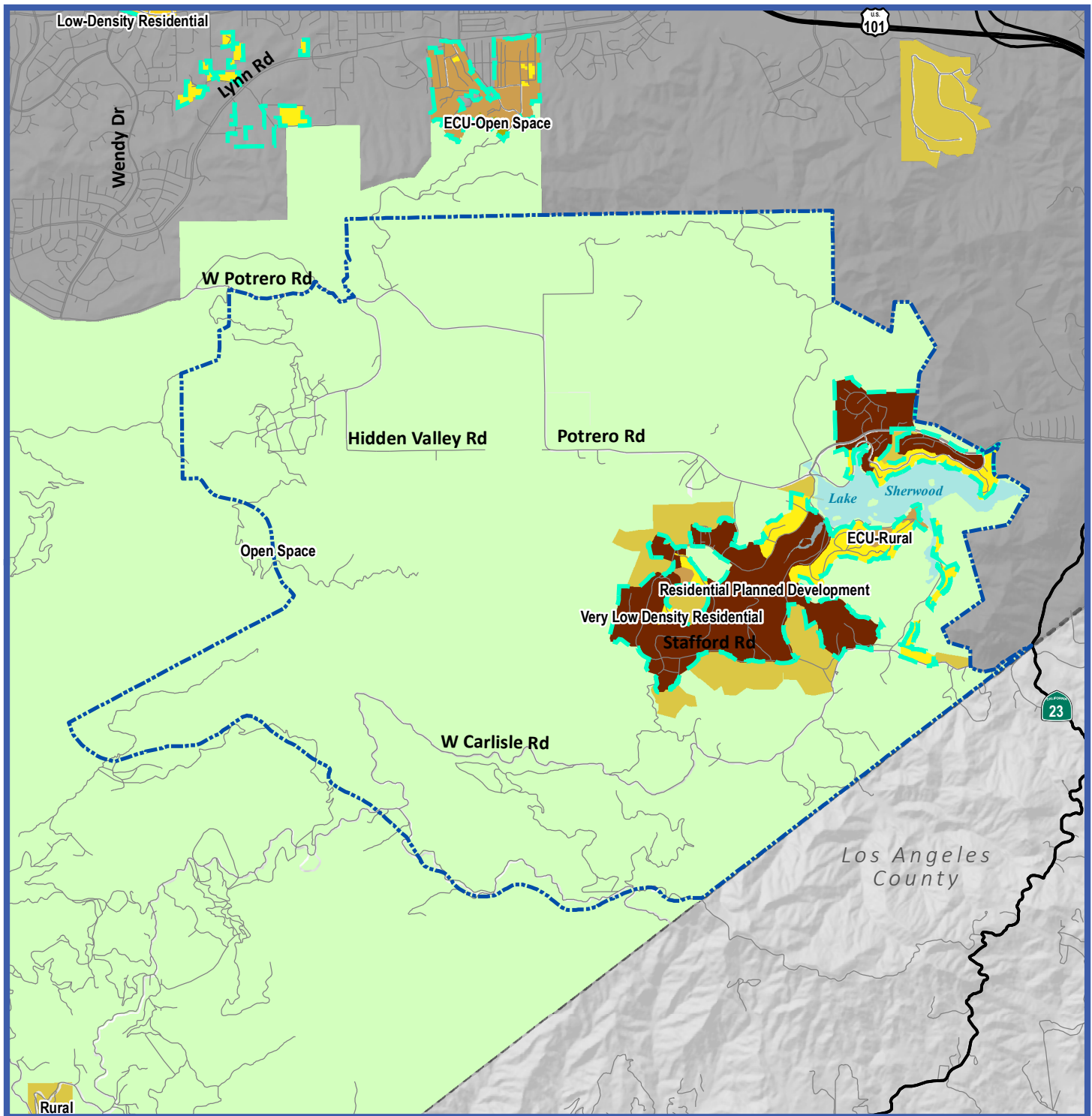
Map Date: August 27, 2019  
Source: Ventura County  
Resource Management  
Agency GIS, 2019;  
Mintier Harnish, 2019



0 0.75 1.5 Miles

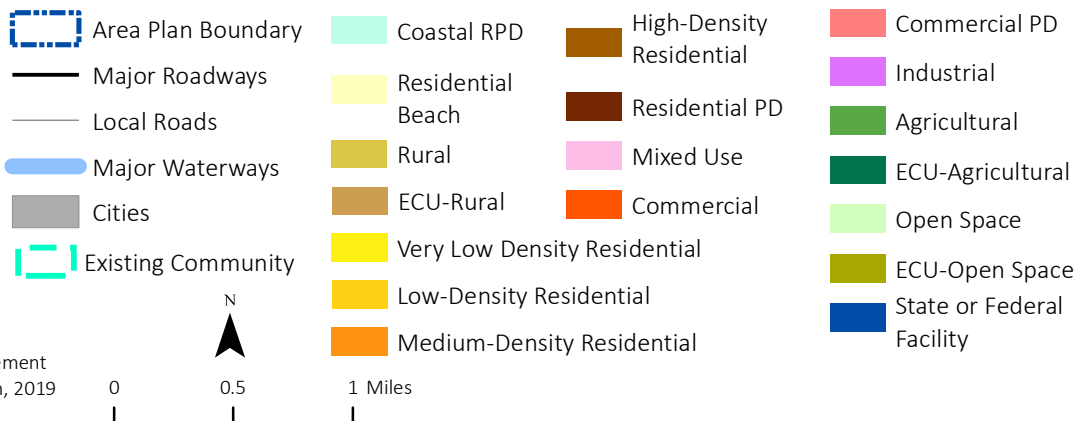


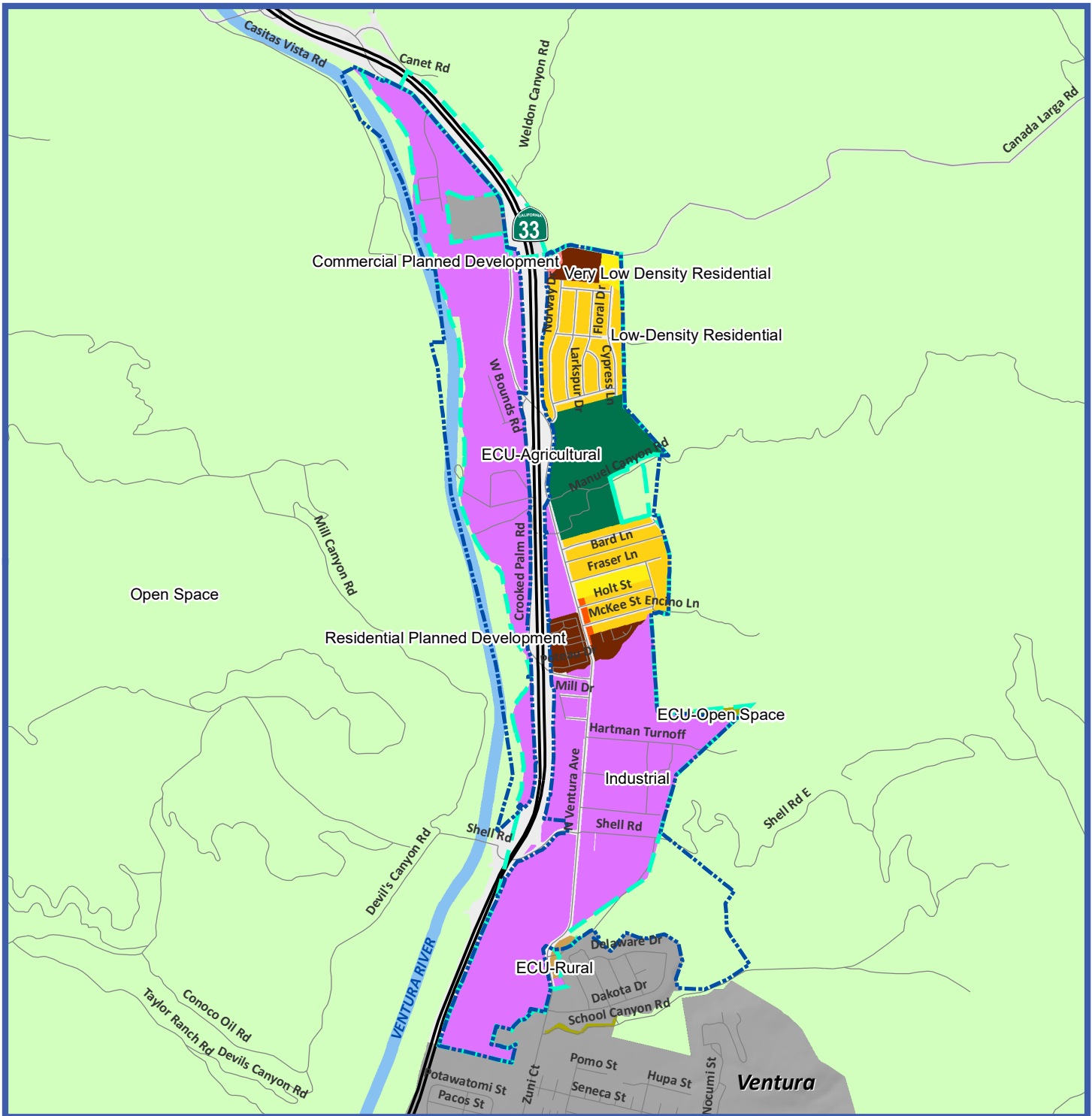




**Figure A-2:**  
General Plan  
Land Use Diagram  
Lake Sherwood/  
Hidden Valley  
Area Plan

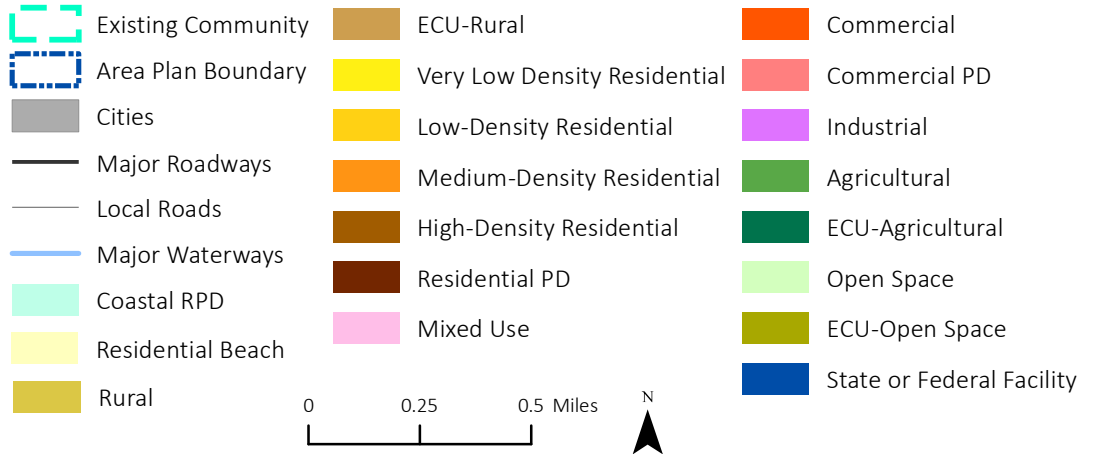
Map Date: August 27, 2019  
Ventura County Resource Management  
Agency GIS, 2019; Mintier Harnish, 2019

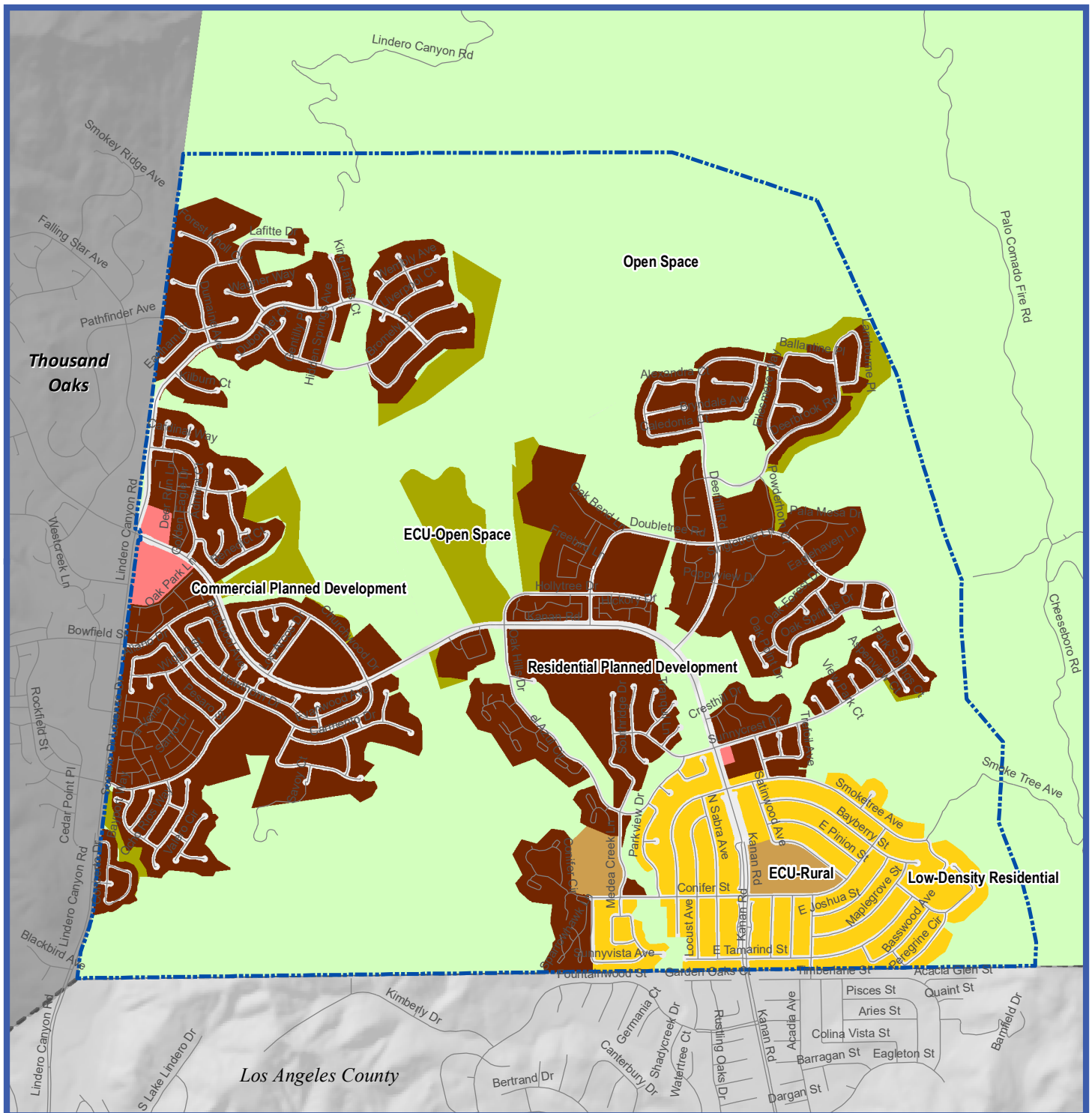




**Figure A-3:**  
General Plan  
Land Use Diagram –  
North Ventura  
Avenue Area Plan

Map Date: August 27, 2019  
Ventura County Resource  
Management Agency GIS, 2019;  
Mintier Harnish, 2019





**Figure A-4:**  
General Plan  
Land Use Diagram -  
Oak Park Area Plan

Map Date: August 27, 2019

Source: Ventura County Resource  
Management Agency GIS, 2019;  
Mintier Harnish, 2019



Existing Community



Area Plan Boundary



Cities



Major Roadways



Local Roads



Major Waterways



Coastal RPD



Residential Beach



Rural



ECU-Rural



Very Low Density Residential



Low-Density Residential



Medium-Density Residential



High-Density Residential



Residential PD



Mixed Use



Commercial



Commercial PD



Industrial



Agricultural



ECU-Agricultural



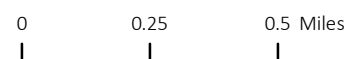
Open Space



ECU-Open Space



State or Federal Facility





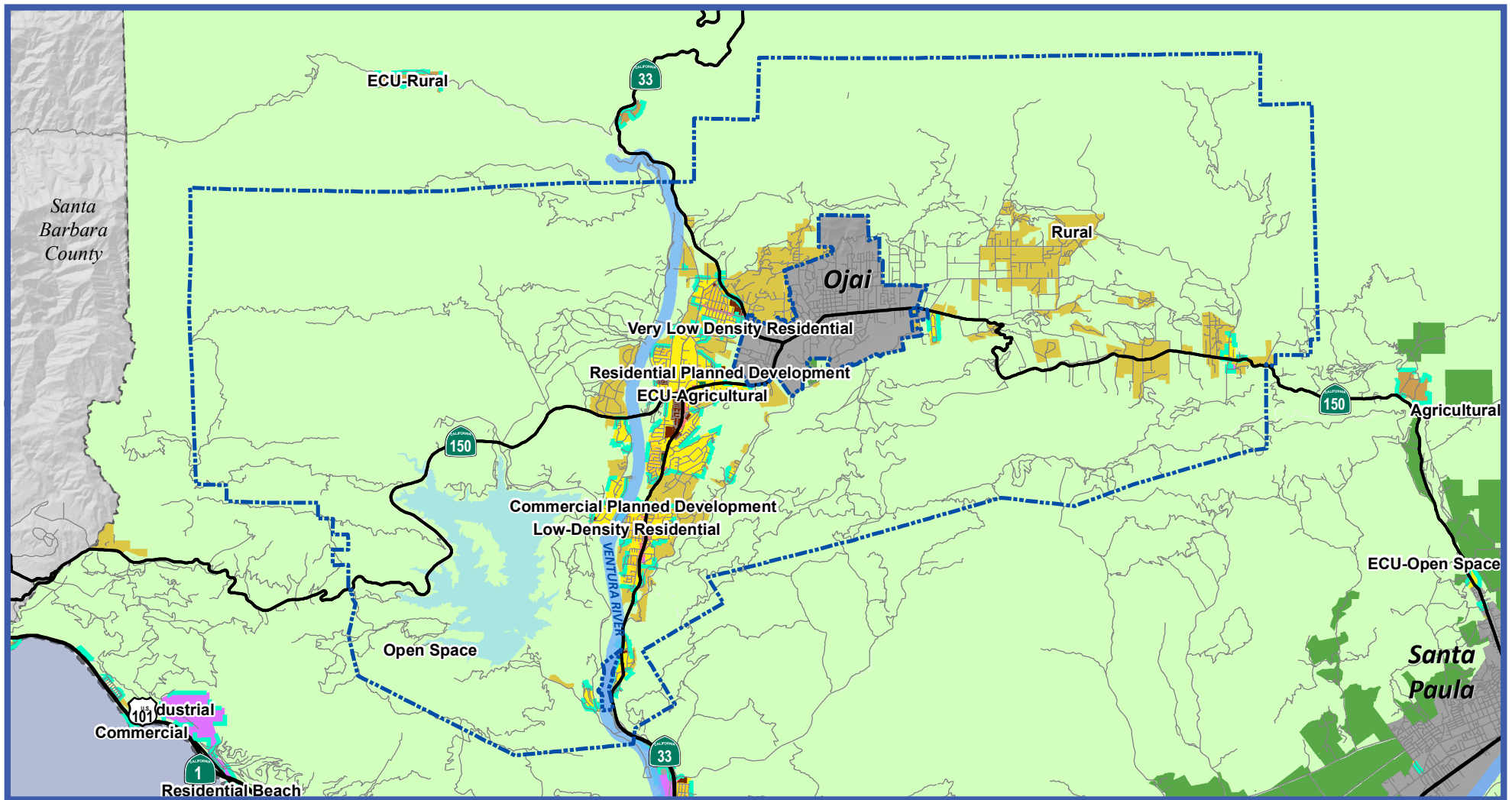


Figure A-5:  
General Plan  
Land Use Diagram -  
Ojai Valley Area Plan

Map Date: August 27, 2019

Source: Ventura County Resource  
Management Agency GIS, 2019;  
Mintier Harnish, 2019

Area Plan Boundary

Major Roadways

Local Roads

Major Waterways

Cities

Existing Community

Coastal RPD

Residential Beach

Rural

ECU-Rural

Very Low Density Residential

Low-Density Residential

Medium-Density Residential

High-Density Residential

Residential PD

Mixed Use

Commercial

Commercial PD

Industrial

Agricultural

ECU-Agricultural

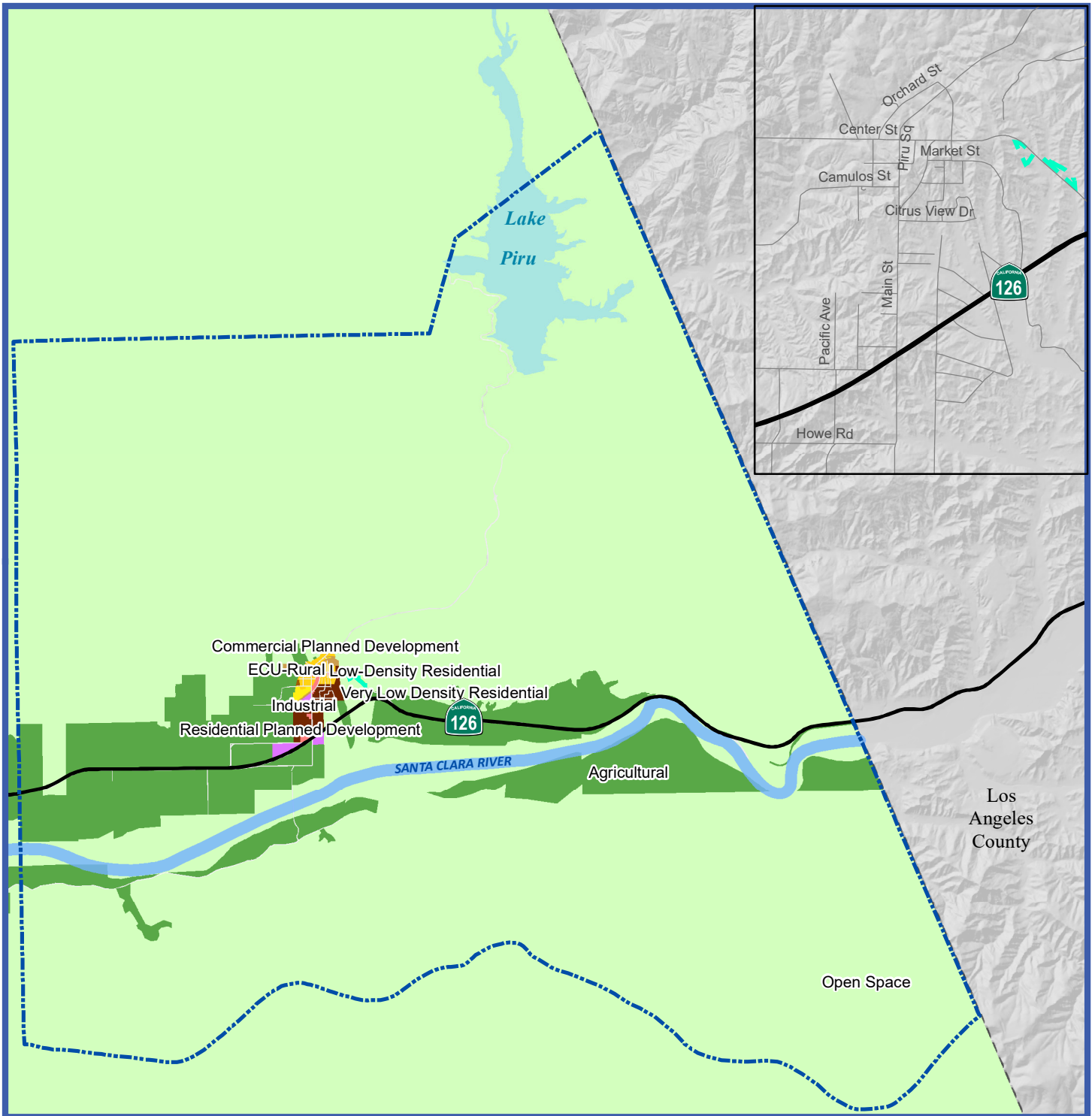
Open Space

ECU-Open Space

State or Federal Facility

0 1 2 Miles





**Figure A-6:  
General Plan  
Land Use Diagram -  
Piru Area Plan**

Map Date: August 27, 2019  
Source: Ventura County Resource  
Management Agency GIS, 2019;  
Mintier Harnish, 2019

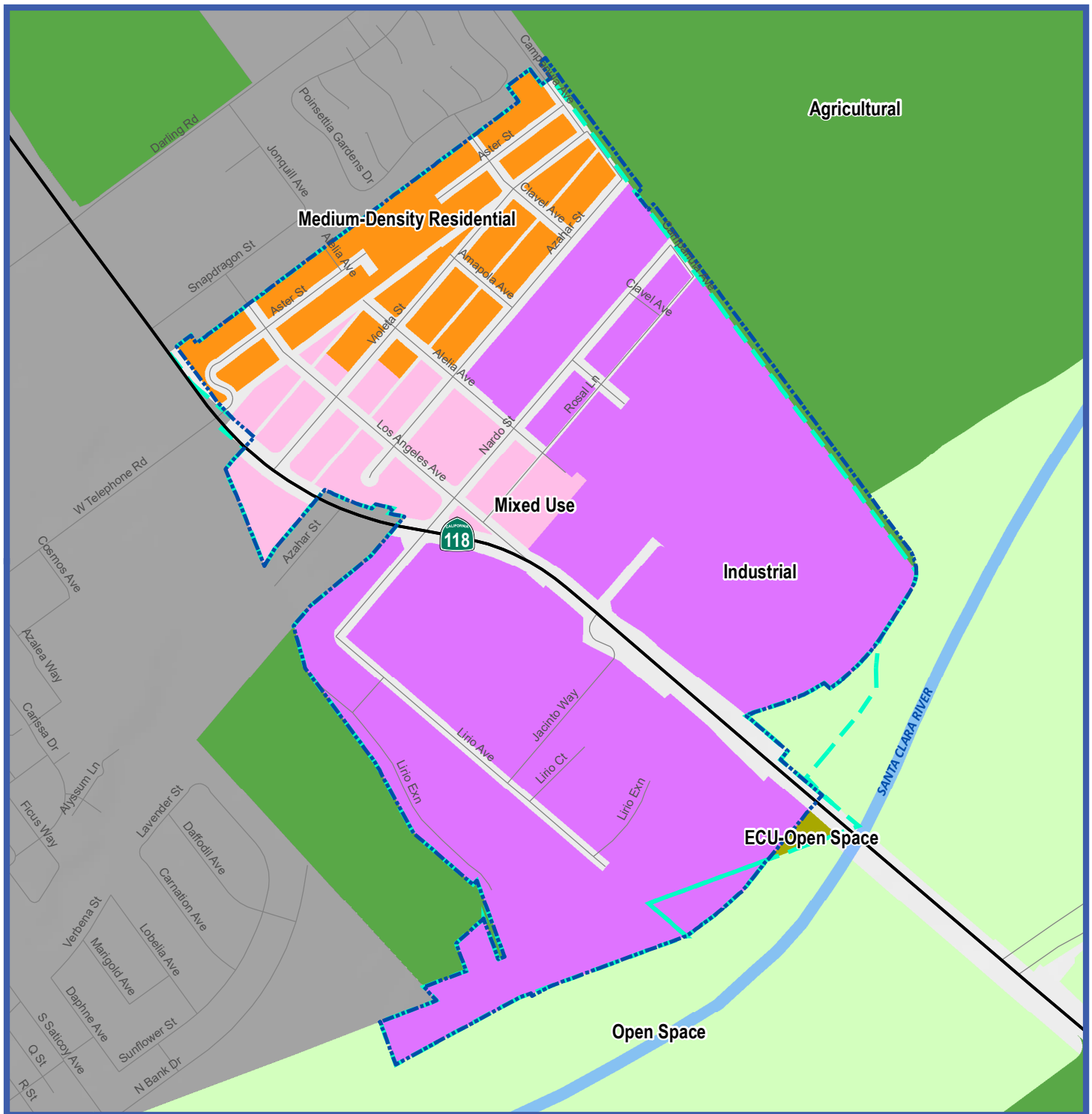
0 1 2 Miles

- Existing Community
- Area Plan Boundary
- Cities
- Major Roadways
- Local Roads
- Major Waterways
- Coastal RPD
- Residential Beach
- Rural

- ECU-Rural
- Very Low Density Residential
- Low-Density Residential
- Medium-Density Residential
- High-Density Residential
- Residential PD
- Mixed Use

- Commercial
- Commercial PD
- Industrial
- Agricultural
- ECU-Agricultural
- Open Space
- ECU-Open Space
- State or Federal Facility

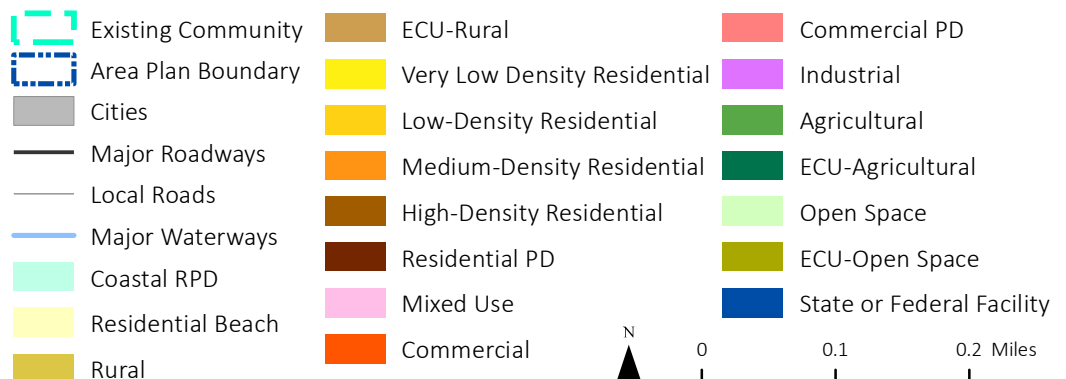




**Figure A-7:  
General Plan  
Land Use Diagram -  
Saticoy Area Plan**

Map Date: August 27, 2019

Source: Ventura County Resource  
Management Agency GIS, 2019;  
Mintier Harnish, 2019





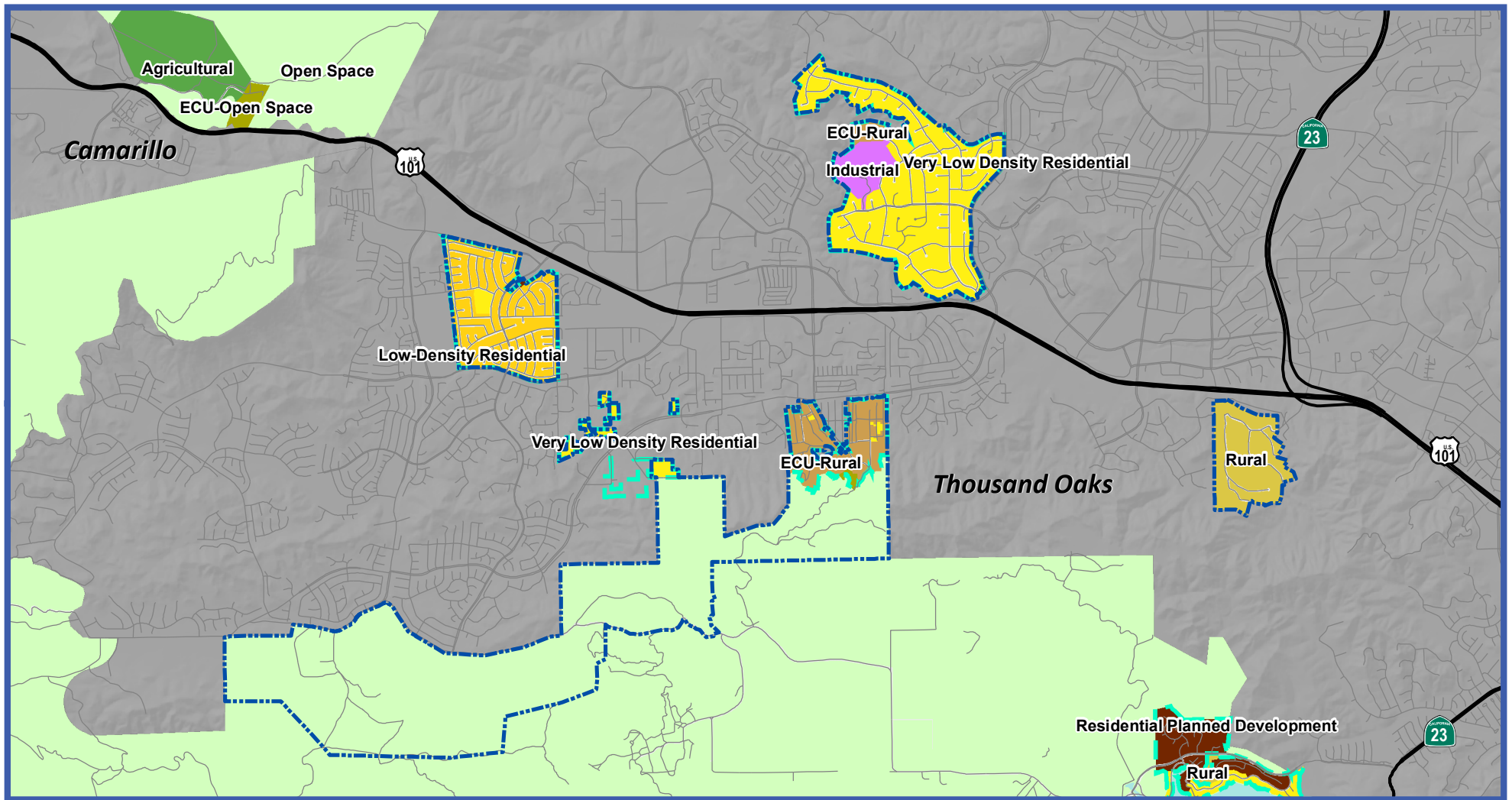


Figure A-8:  
General Plan  
Land Use Diagram -  
Thousand Oaks Area Plan

Map Date: August 27, 2019

Ventura County Resource  
Management Agency GIS, 2019;  
Mintier Harnish, 2019

- Area Plan Boundary
- Major Roadways
- Local Roads
- Major Waterways
- Cities

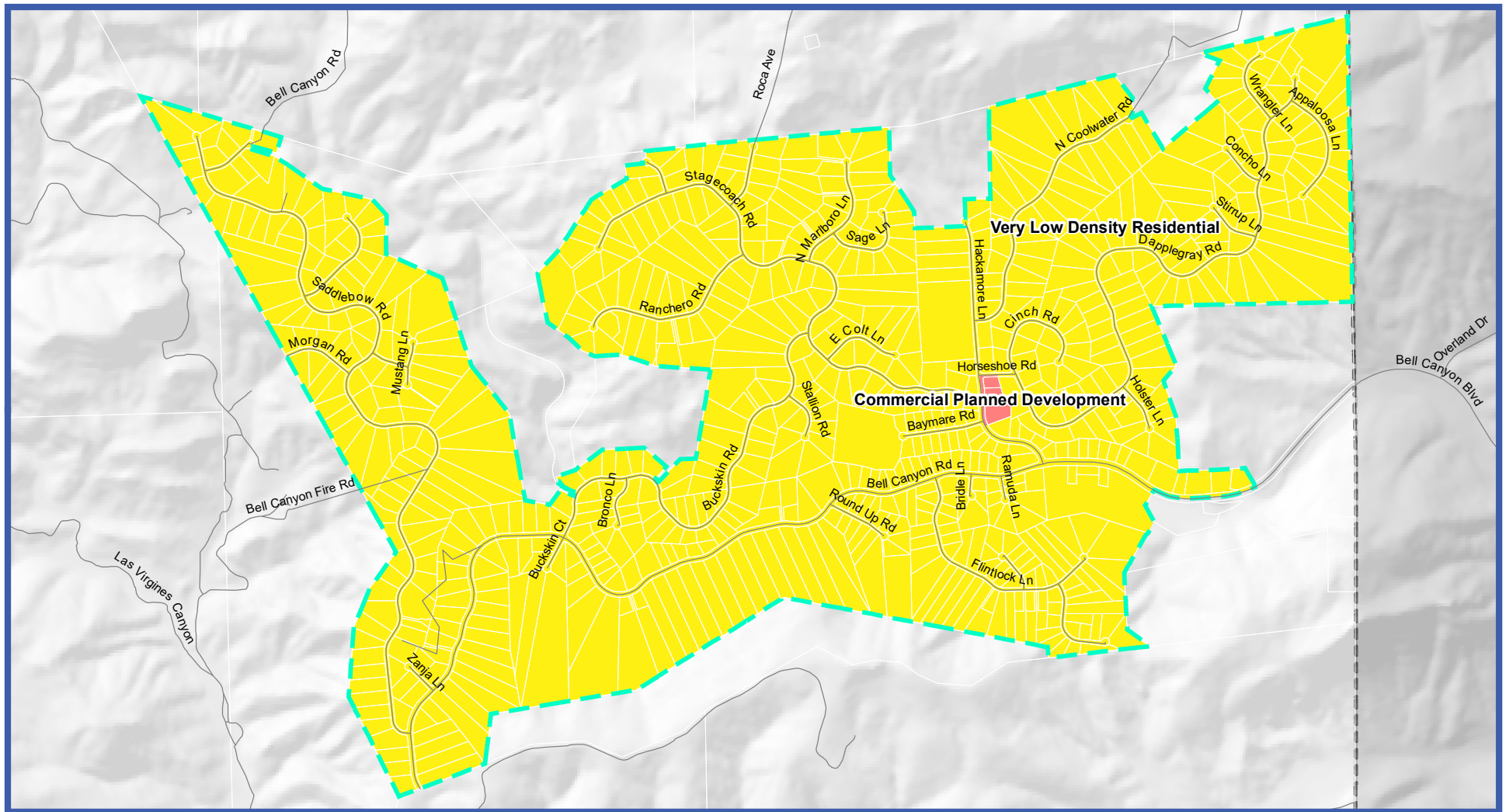
- Existing Community
- Coastal RPD
- Residential Beach
- Rural
- ECU-Rural

- Very Low Density Residential
- Low-Density Residential
- Medium-Density Residential
- High-Density Residential
- Residential PD
- Mixed Use
- Commercial

- Commercial PD
- Industrial
- Agricultural
- ECU-Agricultural
- Open Space
- ECU-Open Space
- State or Federal Facility

0 1 2 Miles





**Figure A-9:**  
General Plan  
Land Use Diagram  
Bell Canyon

Map Date: August 27, 2019

Source: Ventura County Resource  
Management Agency GIS, 2019;  
Mintier Harnish, 2019

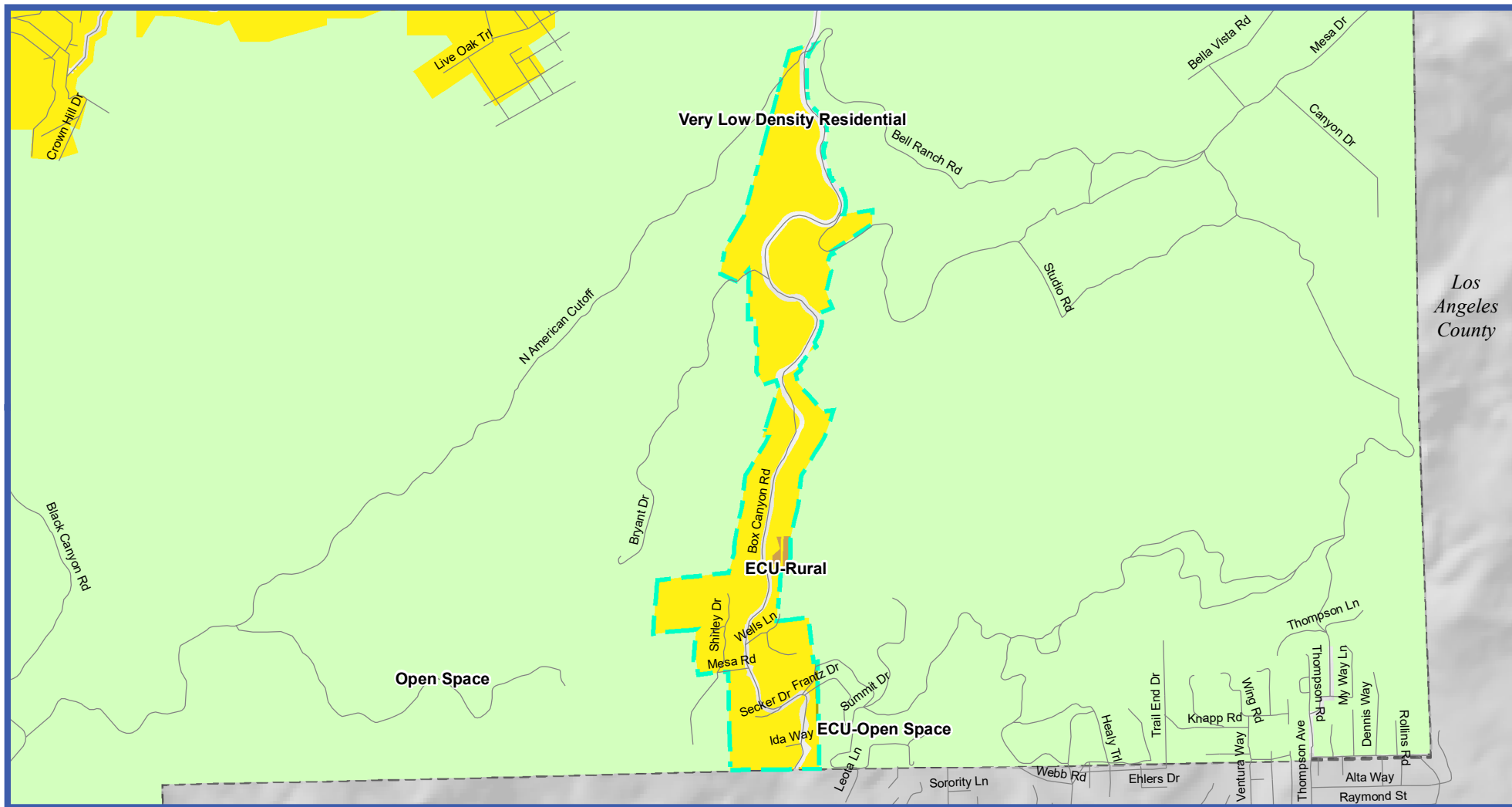


0 0.25 0.5 Miles

- Major Roadways
- Local Roads
- Major Waterways
- Cities

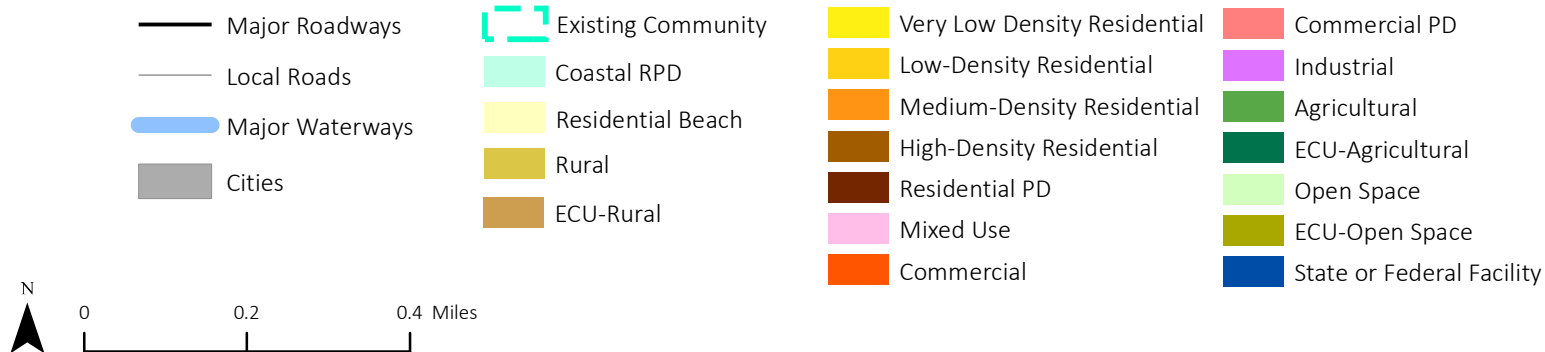
- Existing Community
- Coastal RPD
- Residential Beach
- Rural
- ECU-Rural

- Very Low Density Residential
- Low-Density Residential
- Medium-Density Residential
- High-Density Residential
- Residential PD
- Mixed Use
- Commercial
- Commercial PD
- Industrial
- Agricultural
- ECU-Agricultural
- Open Space
- ECU-Open Space
- State or Federal Facility



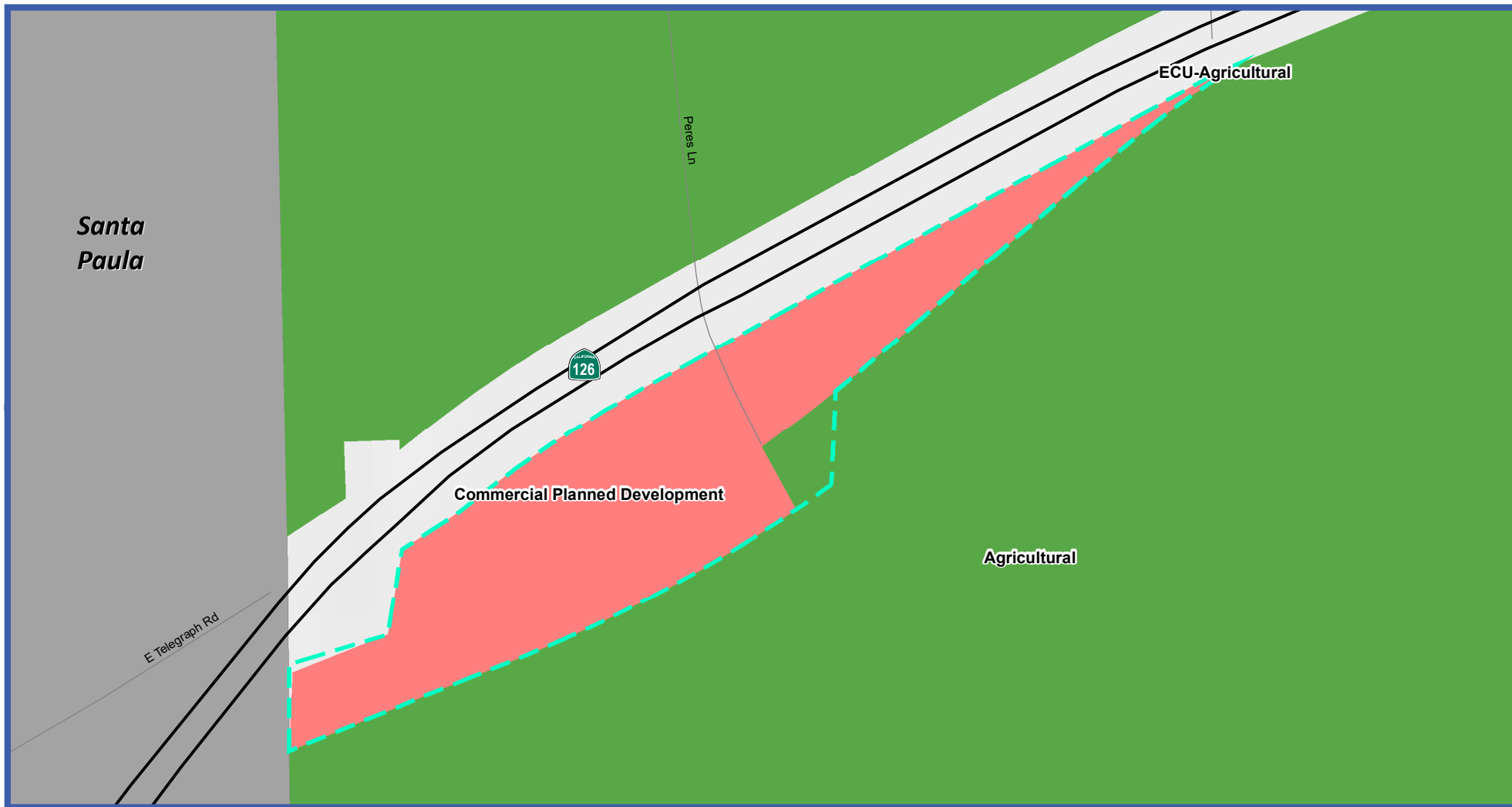
**Figure A-10:**  
General Plan  
Land Use Diagram  
Box Canyon

Map Date: August 27, 2019  
Source: Ventura County Resource  
Management Agency GIS, 2019;  
Mintier Harnish, 2019



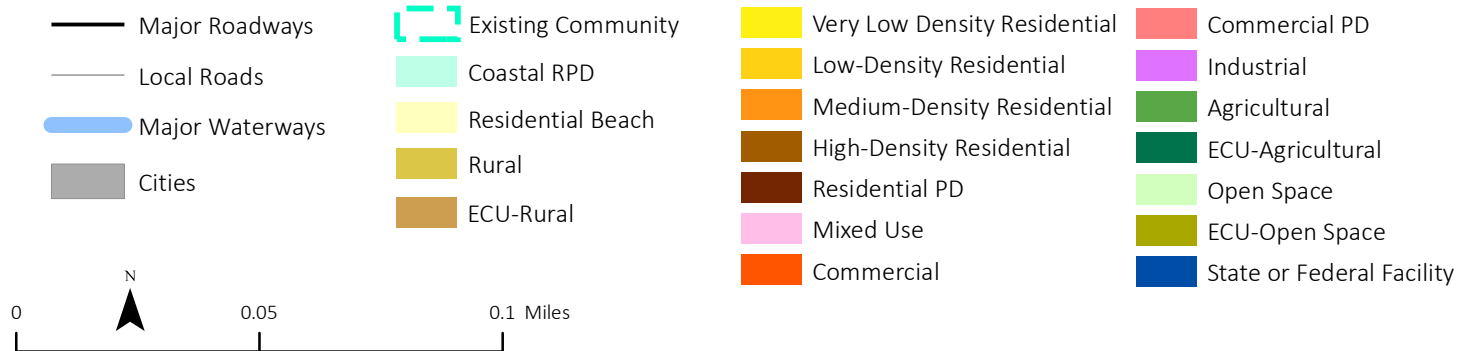


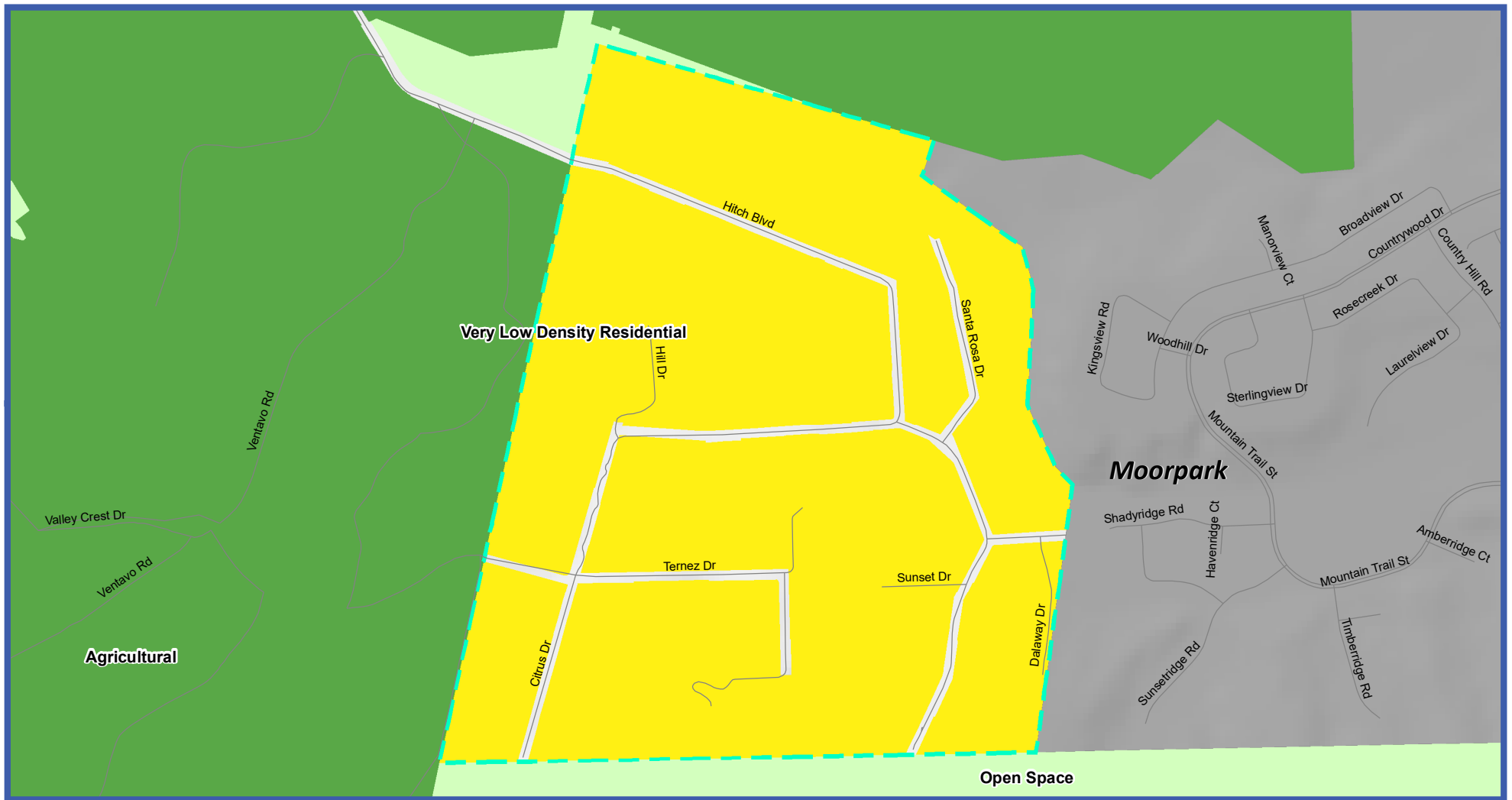




**Figure A-12:**  
General Plan  
Land Use Diagram  
East Santa Paula

Map Date: August 28, 2019  
Source: Ventura County Resource  
Management Agency GIS, 2019;  
Mintier Harnish, 2019





**Figure A-13:**  
General Plan  
Land Use Diagram  
Home Acres

Map Date: August 28, 2019

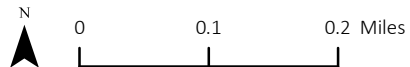
Source: Ventura County Resource  
Management Agency GIS, 2019;  
Mintier Harnish, 2019

- Major Roadways
- Local Roads
- Major Waterways
- Cities

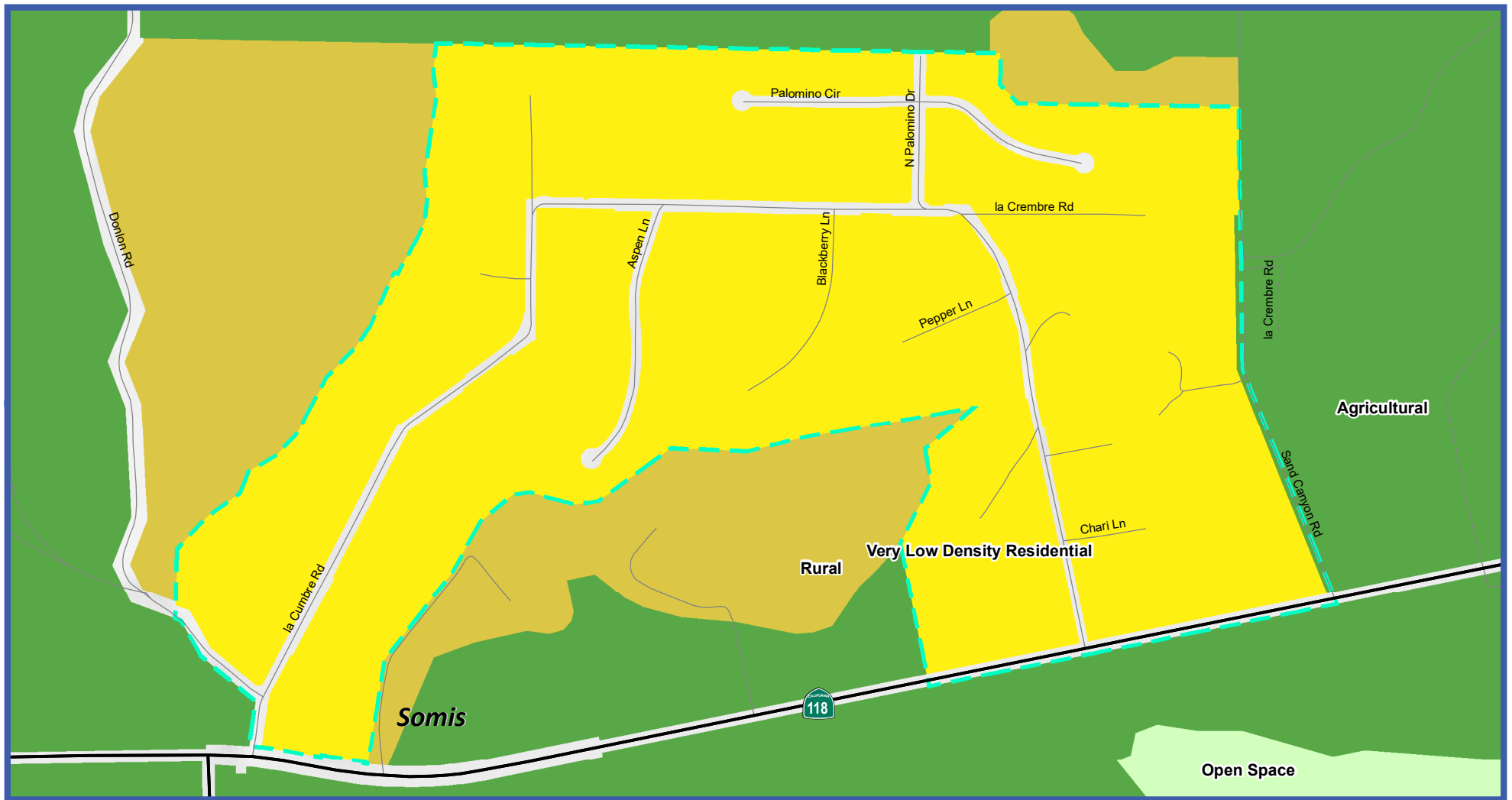
- Existing Community
- Coastal RPD
- Residential Beach
- Rural
- ECU-Rural

- Very Low Density Residential
- Low-Density Residential
- Medium-Density Residential
- High-Density Residential
- Residential PD
- Mixed Use
- Commercial

- Commercial PD
- Industrial
- Agricultural
- ECU-Agricultural
- Open Space
- ECU-Open Space
- State or Federal Facility







**Figure A-14:**  
General Plan  
Land Use Diagram  
La Cumbre

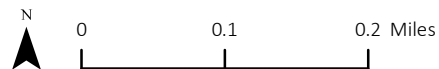
Map Date: August 28, 2019  
Source: Ventura County Resource  
Management Agency GIS, 2019;  
Mintier Harnish, 2019

- Major Roadways
- Local Roads
- Major Waterways
- Cities

- Existing Community
- Coastal RPD
- Residential Beach
- Rural
- ECU-Rural

- Very Low Density Residential
- Low-Density Residential
- Medium-Density Residential
- High-Density Residential
- Residential PD
- Mixed Use
- Commercial

- Commercial PD
- Industrial
- Agricultural
- ECU-Agricultural
- Open Space
- ECU-Open Space
- State or Federal Facility



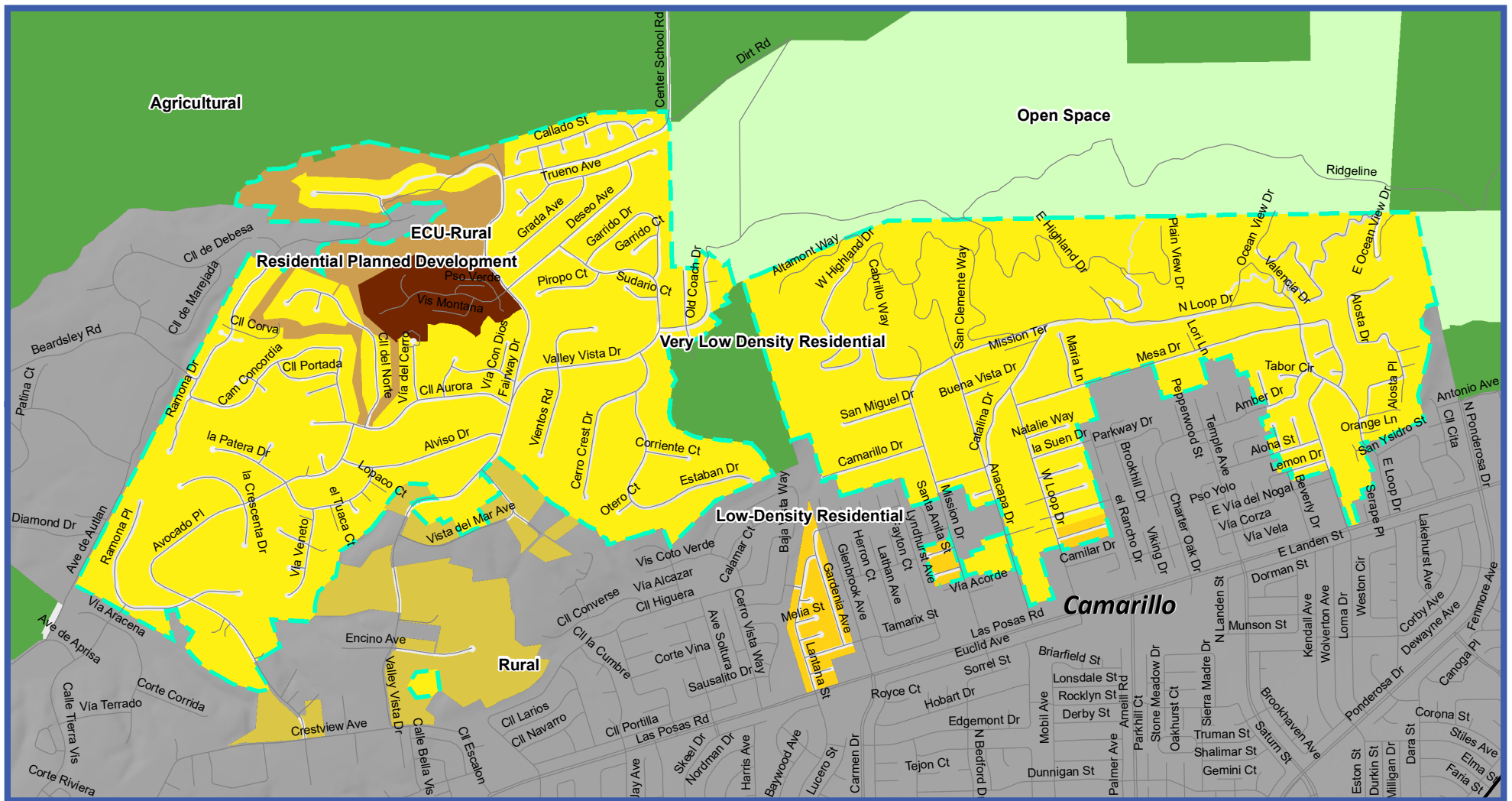
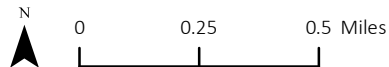
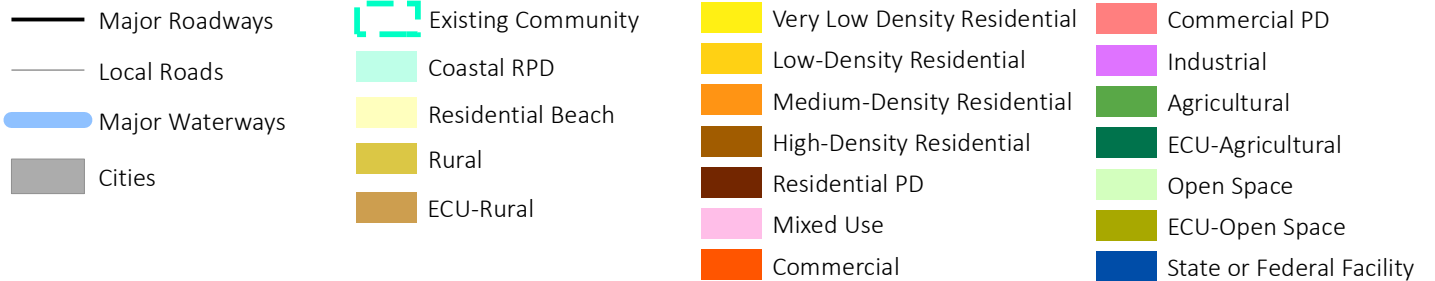


Figure A-15:  
General Plan  
Land Use Diagram  
Las Posas Estates

Map Date: August 28, 2019

Source: Ventura County Resource  
Management Agency GIS, 2019;  
Mintier Harnish, 2019





**Figure A-16:**  
General Plan  
Land Use Diagram  
Lewis Rd

Map Date: August 28, 2019

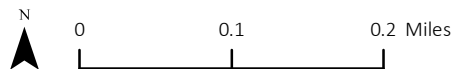
Source: Ventura County Resource  
Management Agency GIS, 2019;  
Mintier Harnish, 2019

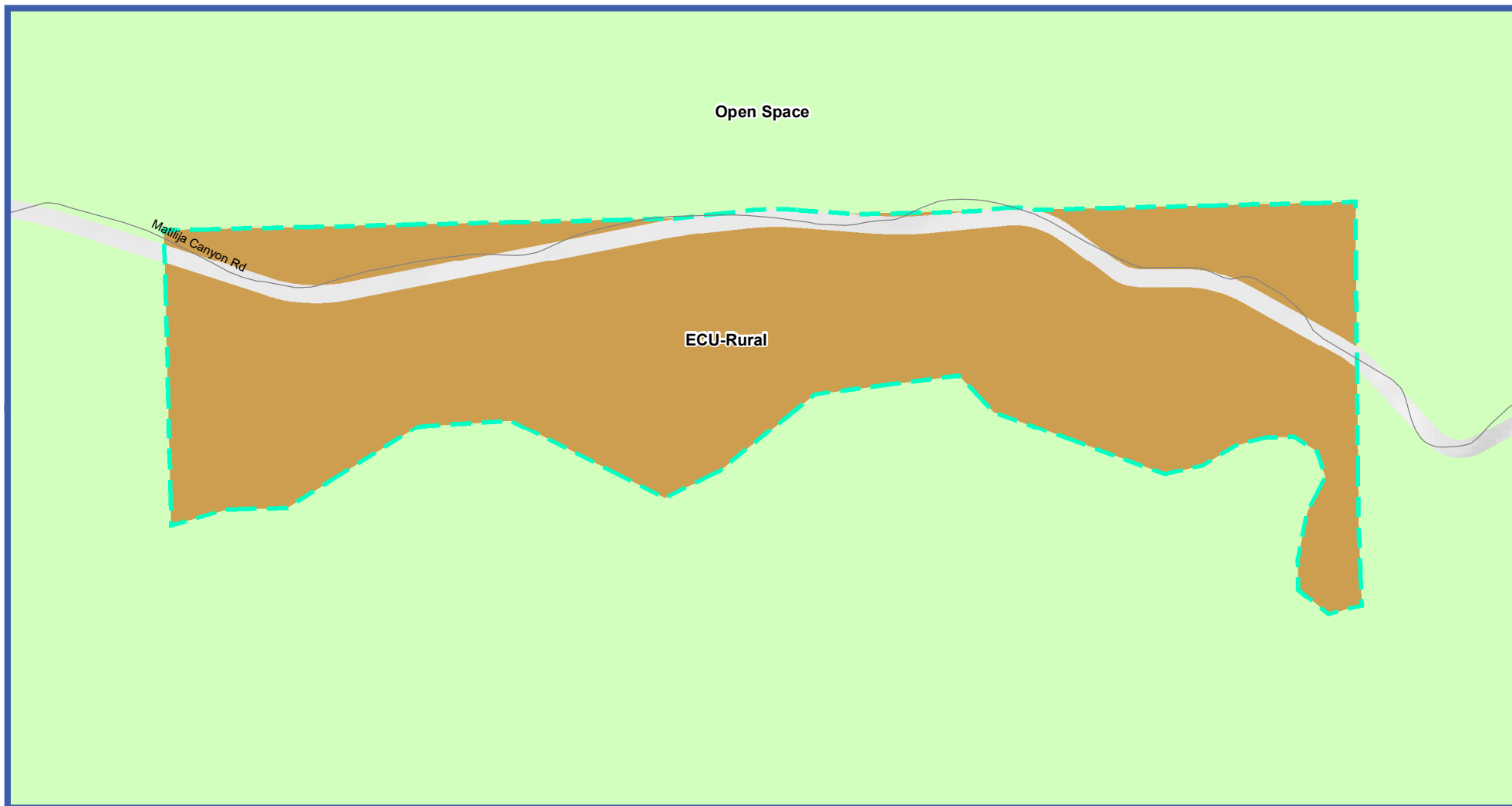
- Major Roadways
- Local Roads
- Major Waterways
- Cities

- Existing Community
- Coastal RPD
- Residential Beach
- Rural
- ECU-Rural

- Very Low Density Residential
- Low-Density Residential
- Medium-Density Residential
- High-Density Residential
- Residential PD
- Mixed Use
- Commercial

- Commercial PD
- Industrial
- Agricultural
- ECU-Agricultural
- Open Space
- ECU-Open Space
- State or Federal Facility





**Figure A-17:**  
General Plan  
Land Use Diagram  
Matilija Canyon

Map Date: August 28, 2019

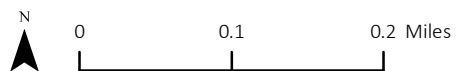
Source: Ventura County Resource  
Management Agency GIS, 2019;  
Mintier Harnish, 2019

- Major Roadways
- Local Roads
- Major Waterways
- Cities

- Existing Community
- Coastal RPD
- Residential Beach
- Rural
- ECU-Rural

- Very Low Density Residential
- Low-Density Residential
- Medium-Density Residential
- High-Density Residential
- Residential PD
- Mixed Use
- Commercial

- Commercial PD
- Industrial
- Agricultural
- ECU-Agricultural
- Open Space
- ECU-Open Space
- State or Federal Facility























**Figure A-18:**  
General Plan  
Land Use Diagram  
Mission Rock Rd








Map Date: August 28, 2019

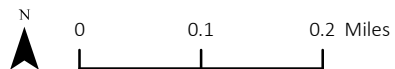
Source: Ventura County Resource  
Management Agency GIS, 2019;  
Mintier Harnish, 2019

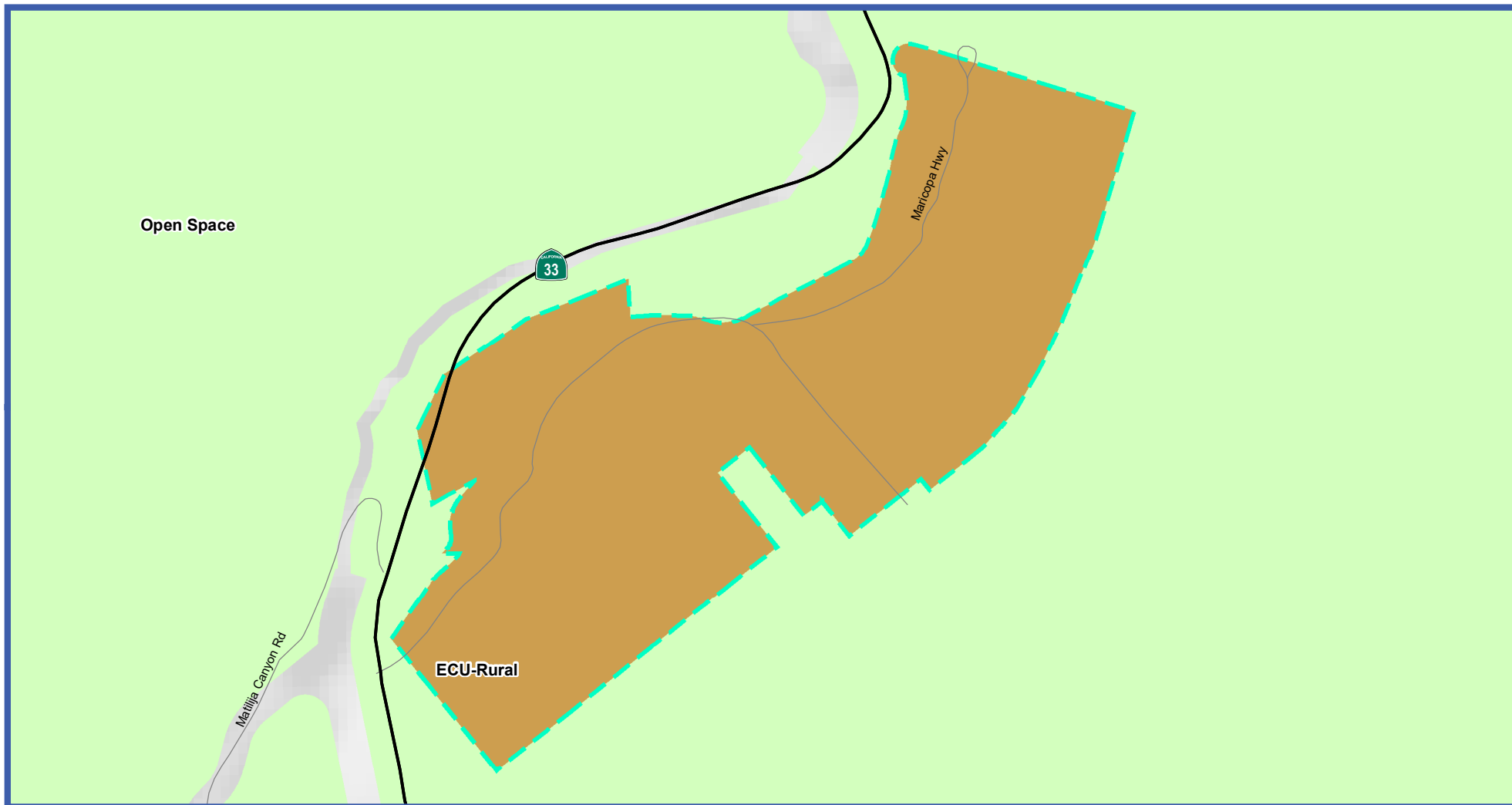
-  Major Roadways
-  Local Roads
-  Major Waterways
-  Cities

-  Existing Community
-  Coastal RPD
-  Residential Beach
-  Rural
-  ECU-Rural

-  Very Low Density Residential
-  Low-Density Residential
-  Medium-Density Residential
-  High-Density Residential
-  Residential PD
-  Mixed Use
-  Commercial

-  Commercial PD
-  Industrial
-  Agricultural
-  ECU-Agricultural
-  Open Space
-  ECU-Open Space
-  State or Federal Facility





**Figure A-19:**  
General Plan  
Land Use Diagram  
North Fork Springs

Map Date: August 28, 2019

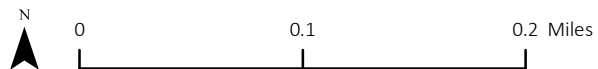
Source: Ventura County Resource  
Management Agency GIS, 2019;  
Mintier Harnish, 2019

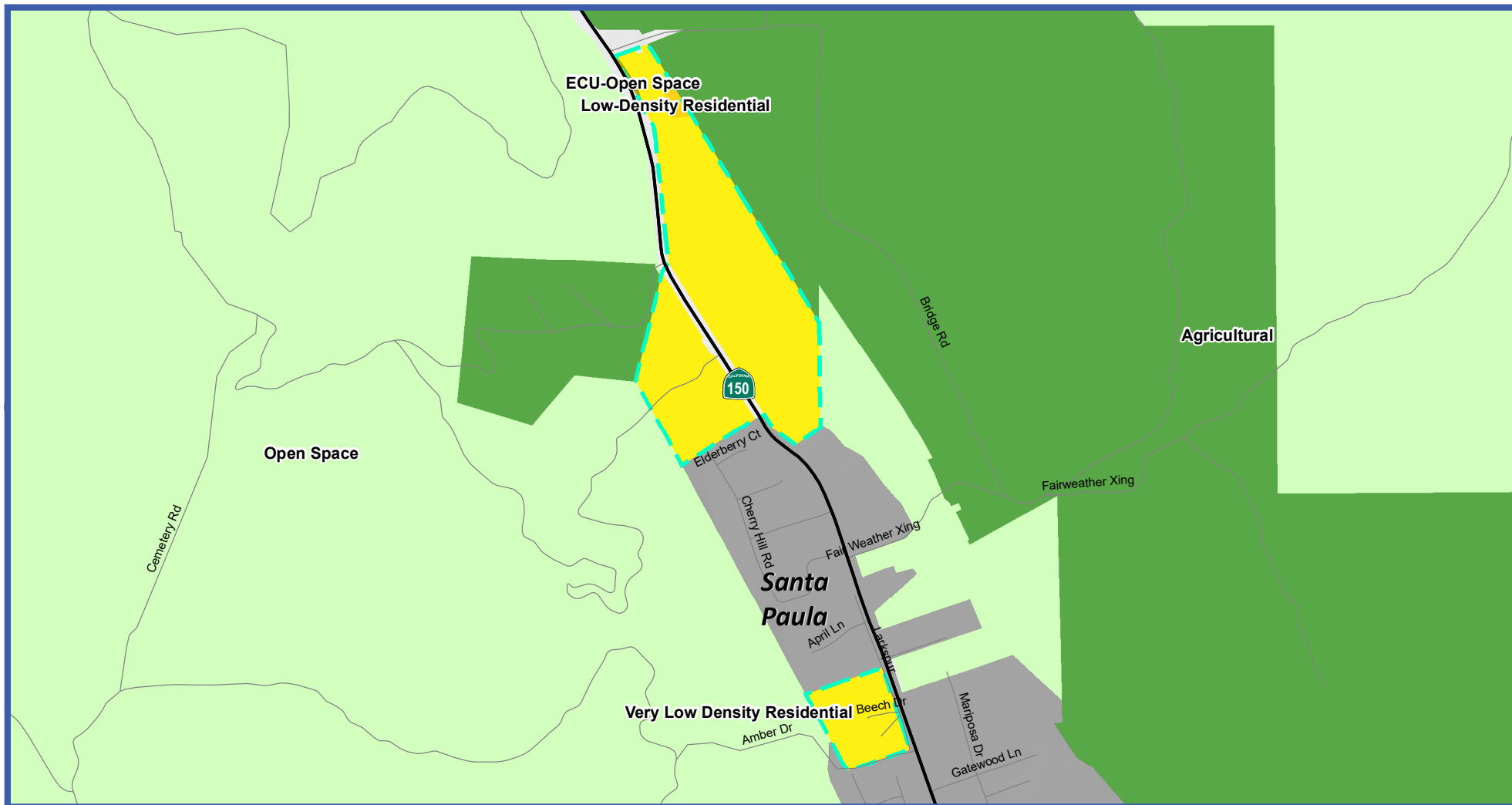
- Major Roadways
- Local Roads
- Major Waterways
- Cities

- Existing Community
- Coastal RPD
- Residential Beach
- Rural
- ECU-Rural

- Very Low Density Residential
- Low-Density Residential
- Medium-Density Residential
- High-Density Residential
- Residential PD
- Mixed Use
- Commercial

- Commercial PD
- Industrial
- Agricultural
- ECU-Agricultural
- Open Space
- ECU-Open Space
- State or Federal Facility





**Figure A-20:**  
General Plan  
Land Use Diagram  
North Santa Paula

Map Date: August 28, 2019

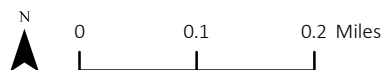
Source: Ventura County Resource  
Management Agency GIS, 2019;  
Mintier Harnish, 2019

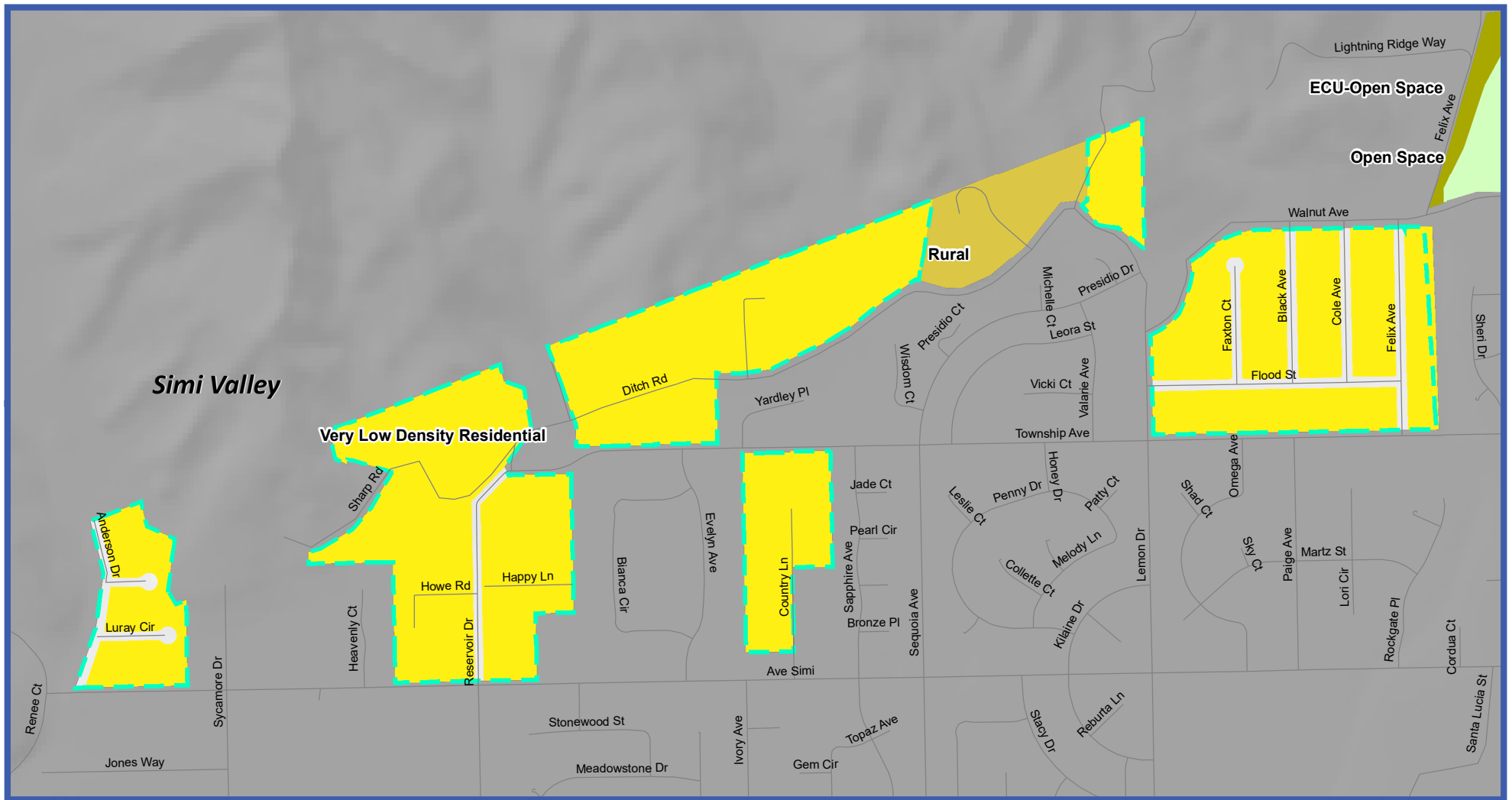
- Major Roadways
- Local Roads
- Major Waterways
- Cities

- Existing Community
- Coastal RPD
- Residential Beach
- Rural
- ECU-Rural

- Very Low Density Residential
- Low-Density Residential
- Medium-Density Residential
- High-Density Residential
- Residential PD
- Mixed Use
- Commercial

- Commercial PD
- Industrial
- Agricultural
- ECU-Agricultural
- Open Space
- ECU-Open Space
- State or Federal Facility





**Figure A-21:**  
General Plan  
Land Use Diagram  
North Simi Valley

Map Date: August 28, 2019

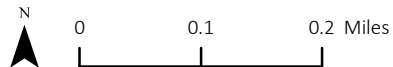
Source: Ventura County Resource  
Management Agency GIS, 2019;  
Mintier Harnish, 2019

- Major Roadways
- Local Roads
- Major Waterways
- Cities

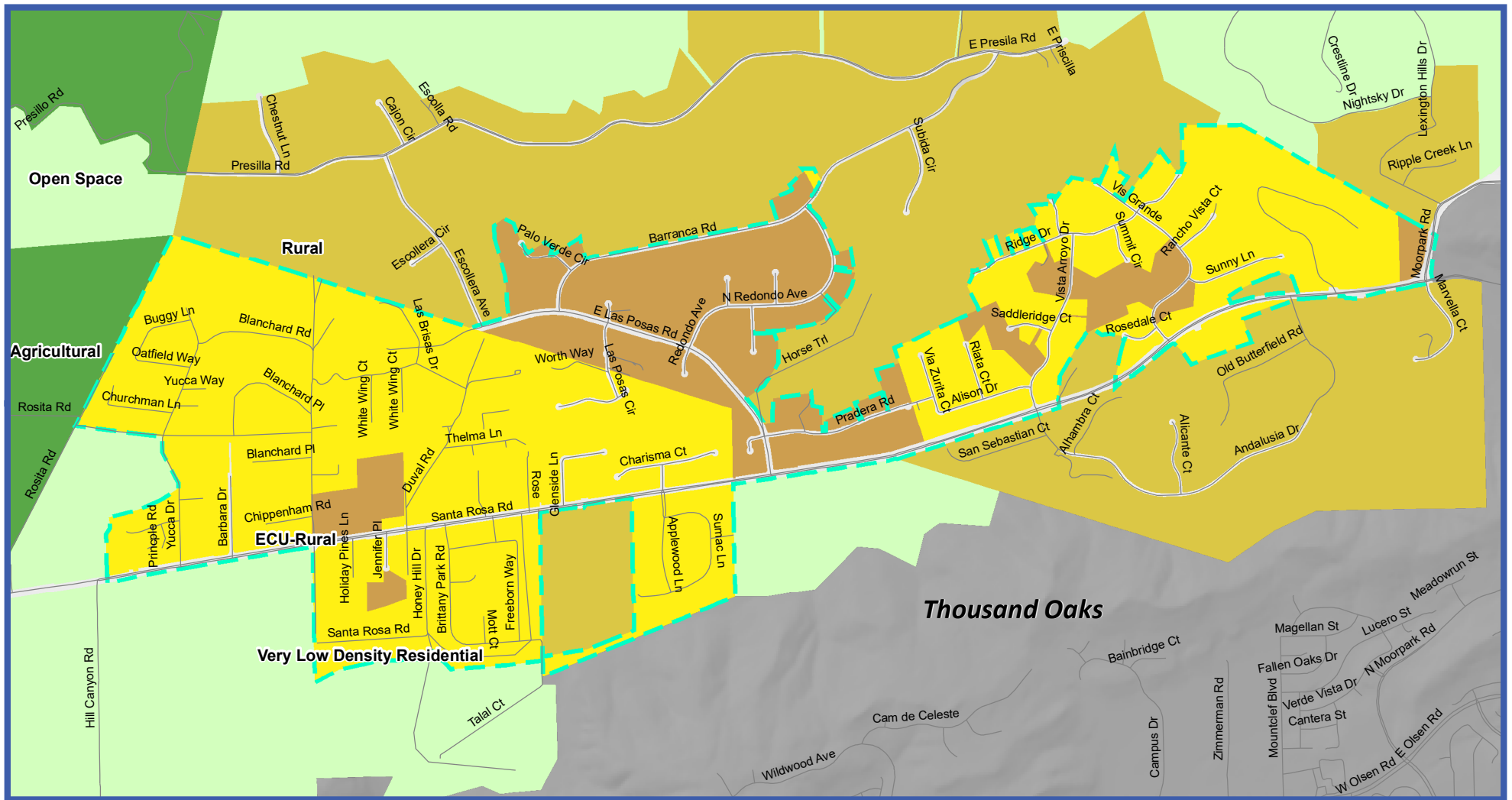
- Existing Community
- Coastal RPD
- Residential Beach
- Rural
- ECU-Rural

- Very Low Density Residential
- Low-Density Residential
- Medium-Density Residential
- High-Density Residential
- Residential PD
- Mixed Use
- Commercial

- Commercial PD
- Industrial
- Agricultural
- ECU-Agricultural
- Open Space
- ECU-Open Space
- State or Federal Facility







**Figure A-22:**  
General Plan  
Land Use Diagram  
Santa Rosa

Map Date: August 28, 2019

Source: Ventura County Resource  
Management Agency GIS, 2019;  
Mintier Harnish, 2019



0 0.25 0.5 Miles

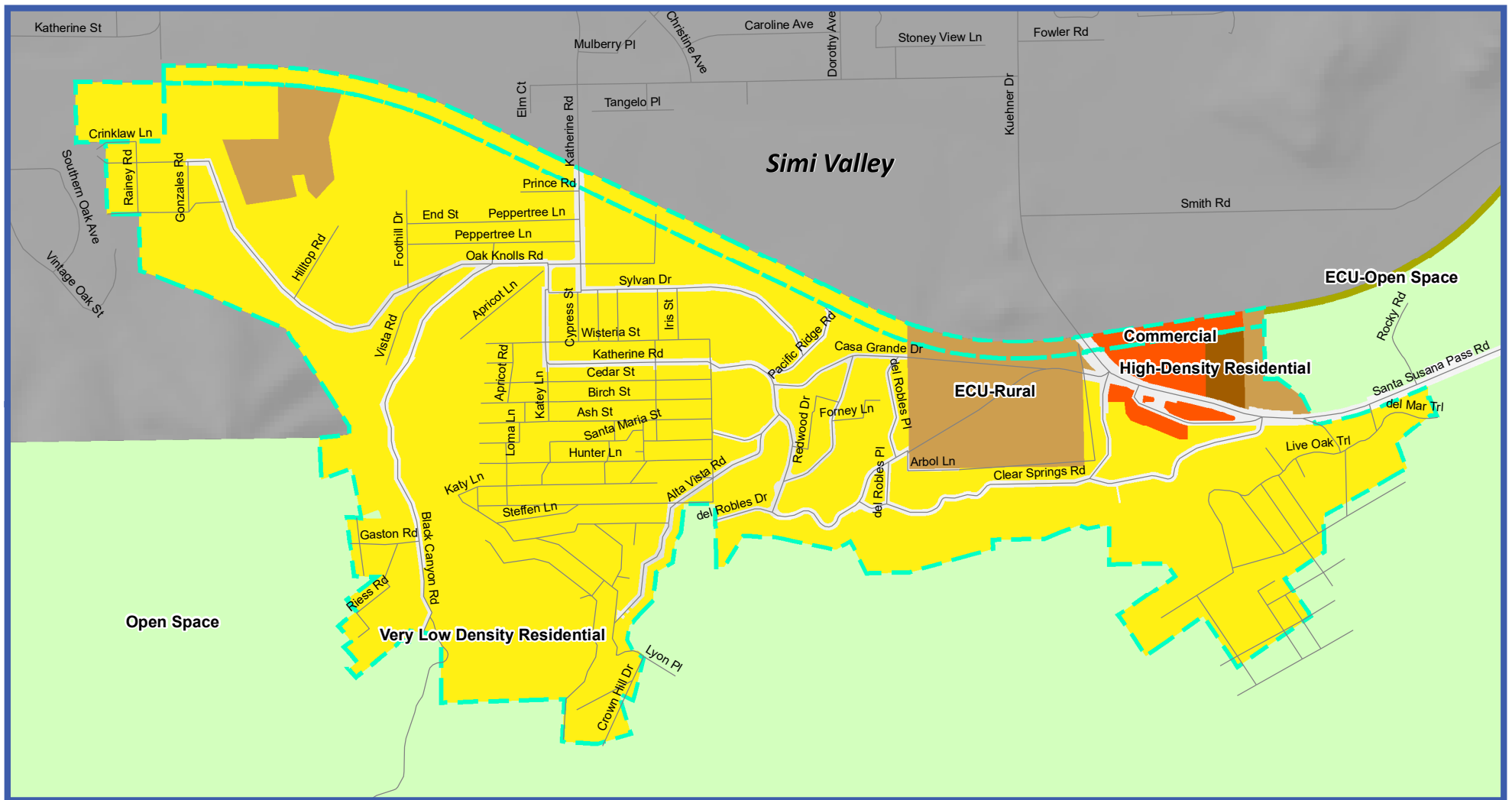


Figure A-23:  
General Plan  
Land Use Diagram  
Santa Susana

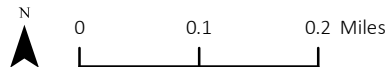
Map Date: August 28, 2019

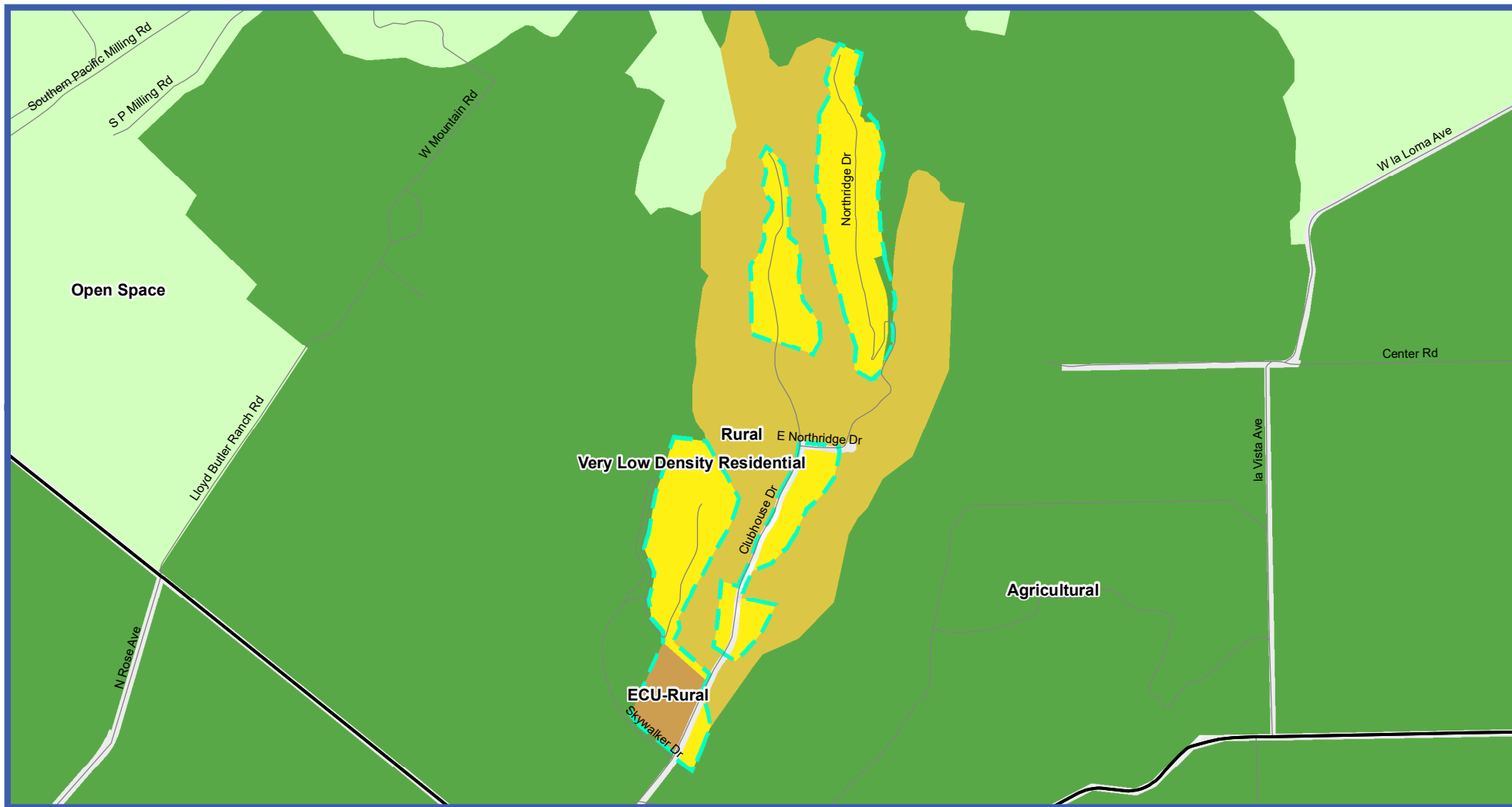
Source: Ventura County Resource  
Management Agency GIS, 2019;  
Mintier Harnish, 2019

- Major Roadways
- Local Roads
- Major Waterways
- Cities

- Existing Community
- Coastal RPD
- Residential Beach
- Rural
- ECU-Rural

- Very Low Density Residential
- Low-Density Residential
- Medium-Density Residential
- High-Density Residential
- Residential PD
- Mixed Use
- Commercial
- Commercial PD
- Industrial
- Agricultural
- ECU-Agricultural
- Open Space
- ECU-Open Space
- State or Federal Facility





**Figure A-24:**  
General Plan  
Land Use Diagram  
Saticoy Country Club

Map Date: August 28, 2019

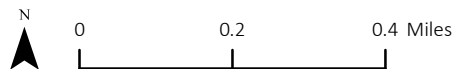
Source: Ventura County Resource  
Management Agency GIS, 2019;  
Mintier Harnish, 2019

- Major Roadways
- Local Roads
- Major Waterways
- Cities

- Existing Community
- Coastal RPD
- Residential Beach
- Rural
- ECU-Rural

- Very Low Density Residential
- Low-Density Residential
- Medium-Density Residential
- High-Density Residential
- Residential PD
- Mixed Use
- Commercial

- Commercial PD
- Industrial
- Agricultural
- ECU-Agricultural
- Open Space
- ECU-Open Space
- State or Federal Facility



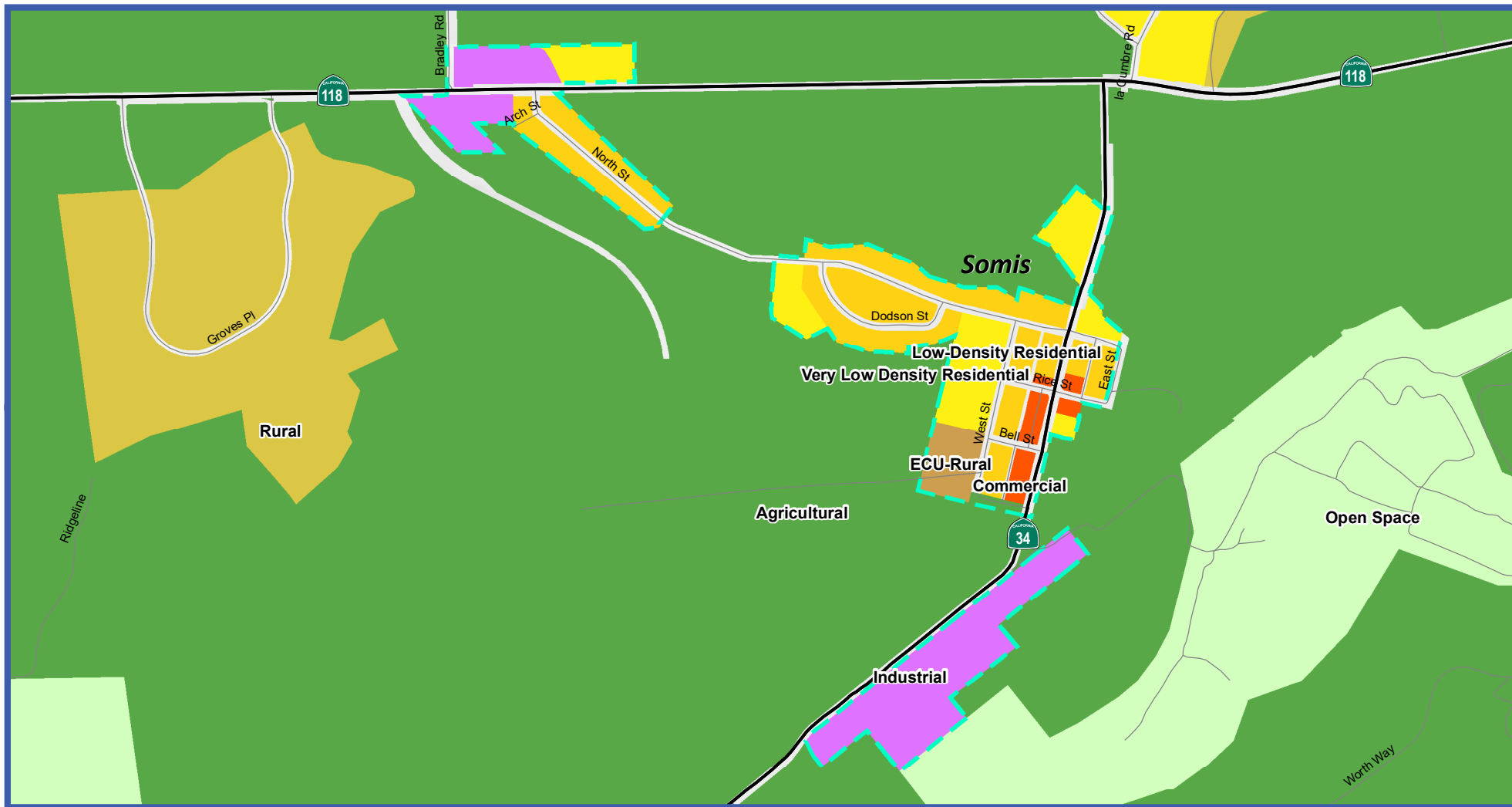


Figure A-25:  
General Plan  
Land Use Diagram  
Somis

Map Date: August 28, 2019

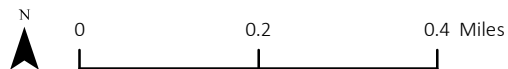
Source: Ventura County Resource  
Management Agency GIS, 2019;  
Mintier Harnish, 2019

- Major Roadways
- Local Roads
- Major Waterways
- Cities

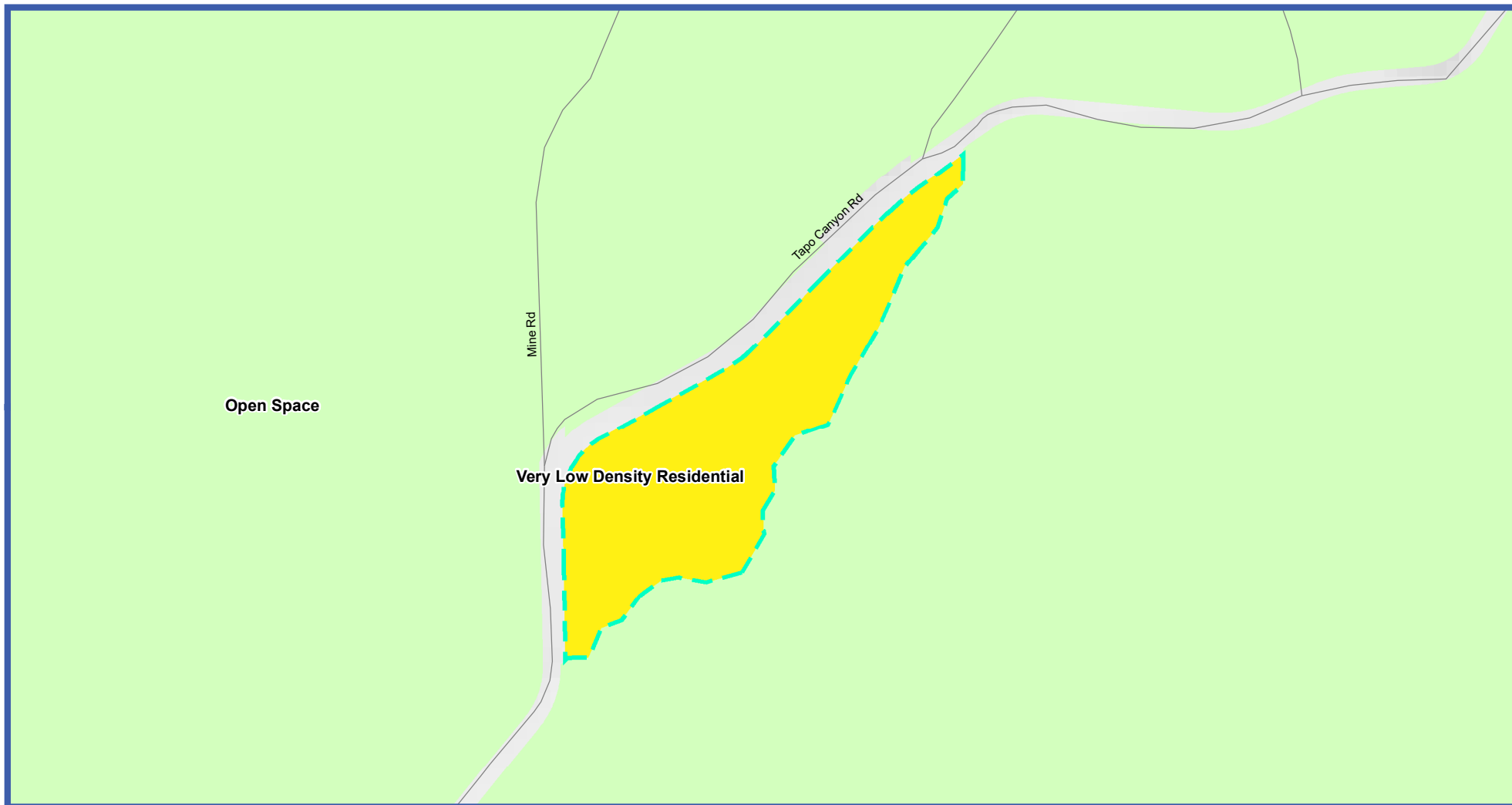
- Existing Community
- Coastal RPD
- Residential Beach
- Rural
- ECU-Rural

- Very Low Density Residential
- Low-Density Residential
- Medium-Density Residential
- High-Density Residential
- Residential PD
- Mixed Use
- Commercial

- Commercial PD
- Industrial
- Agricultural
- ECU-Agricultural
- Open Space
- ECU-Open Space
- State or Federal Facility







**Figure A-26:**  
General Plan  
Land Use Diagram  
Tapo Canyon

Map Date: August 28, 2019

Source: Ventura County Resource  
Management Agency GIS, 2019;  
Mintier Harnish, 2019

— Major Roadways

— Local Roads

— Major Waterways

— Cities

— Existing Community

— Coastal RPD

— Residential Beach

— Rural

— ECU-Rural

Very Low Density Residential

Low-Density Residential

Medium-Density Residential

High-Density Residential

Residential PD

Mixed Use

Commercial

Commercial PD

Industrial

Agricultural

ECU-Agricultural

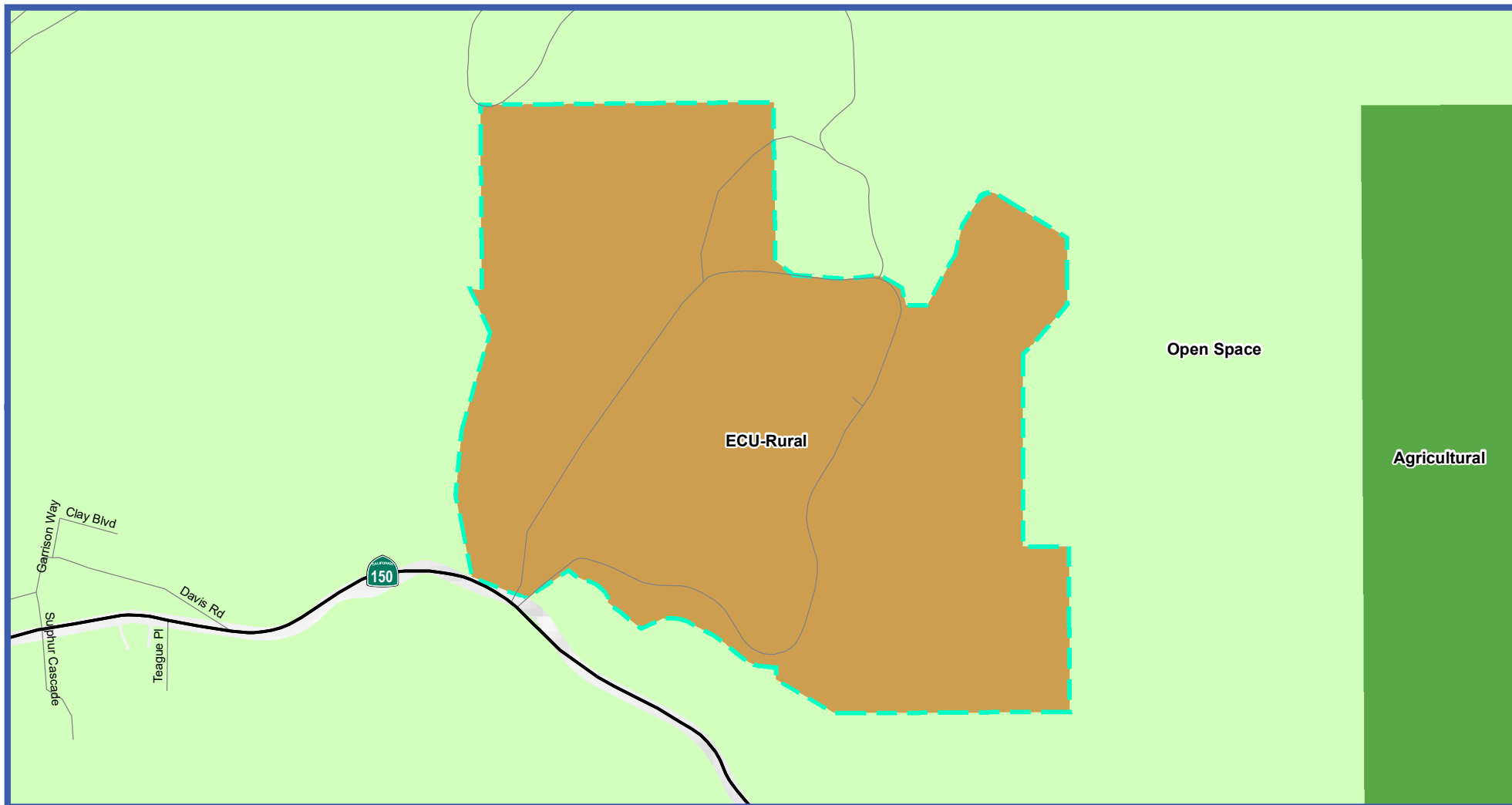
Open Space

ECU-Open Space

State or Federal Facility



0 0.05 0.1 Miles



**Figure A-27:**  
General Plan  
Land Use Diagram  
Thomas Aquinas College

Map Date: August 28, 2019

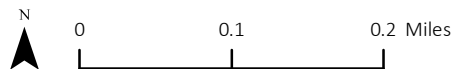
Source: Ventura County Resource  
Management Agency GIS, 2019;  
Mintier Harnish, 2019

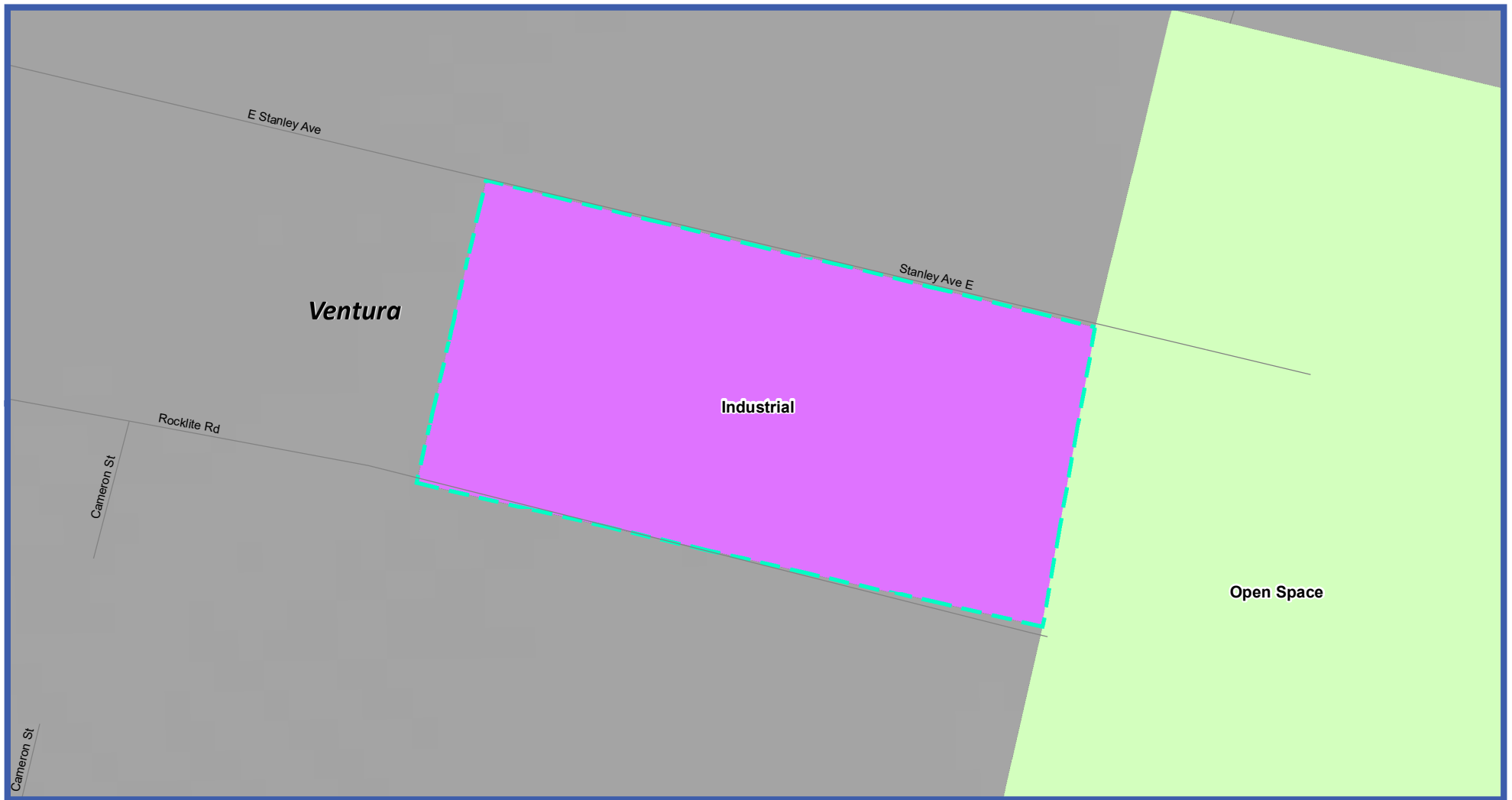
- Major Roadways
- Local Roads
- Major Waterways
- Cities

- Existing Community
- Coastal RPD
- Residential Beach
- Rural
- ECU-Rural

- Very Low Density Residential
- Low-Density Residential
- Medium-Density Residential
- High-Density Residential
- Residential PD
- Mixed Use
- Commercial

- Commercial PD
- Industrial
- Agricultural
- ECU-Agricultural
- Open Space
- ECU-Open Space
- State or Federal Facility





**Figure A-28:**  
General Plan  
Land Use Diagram  
Ventura Avenue

Map Date: August 28, 2019

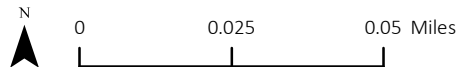
Source: Ventura County Resource  
Management Agency GIS, 2019;  
Mintier Harnish, 2019

- Major Roadways
- Local Roads
- Major Waterways
- Cities

- Existing Community
- Coastal RPD
- Residential Beach
- Rural
- ECU-Rural

- Very Low Density Residential
- Low-Density Residential
- Medium-Density Residential
- High-Density Residential
- Residential PD
- Mixed Use
- Commercial

- Commercial PD
- Industrial
- Agricultural
- ECU-Agricultural
- Open Space
- ECU-Open Space
- State or Federal Facility





**Figure A-29:**  
General Plan  
Land Use Diagram  
West Santa Paula

Map Date: August 28, 2019

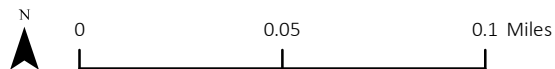
Source: Ventura County Resource  
Management Agency GIS, 2019;  
Mintier Harnish, 2019

- Major Roadways
- Local Roads
- Major Waterways
- Cities

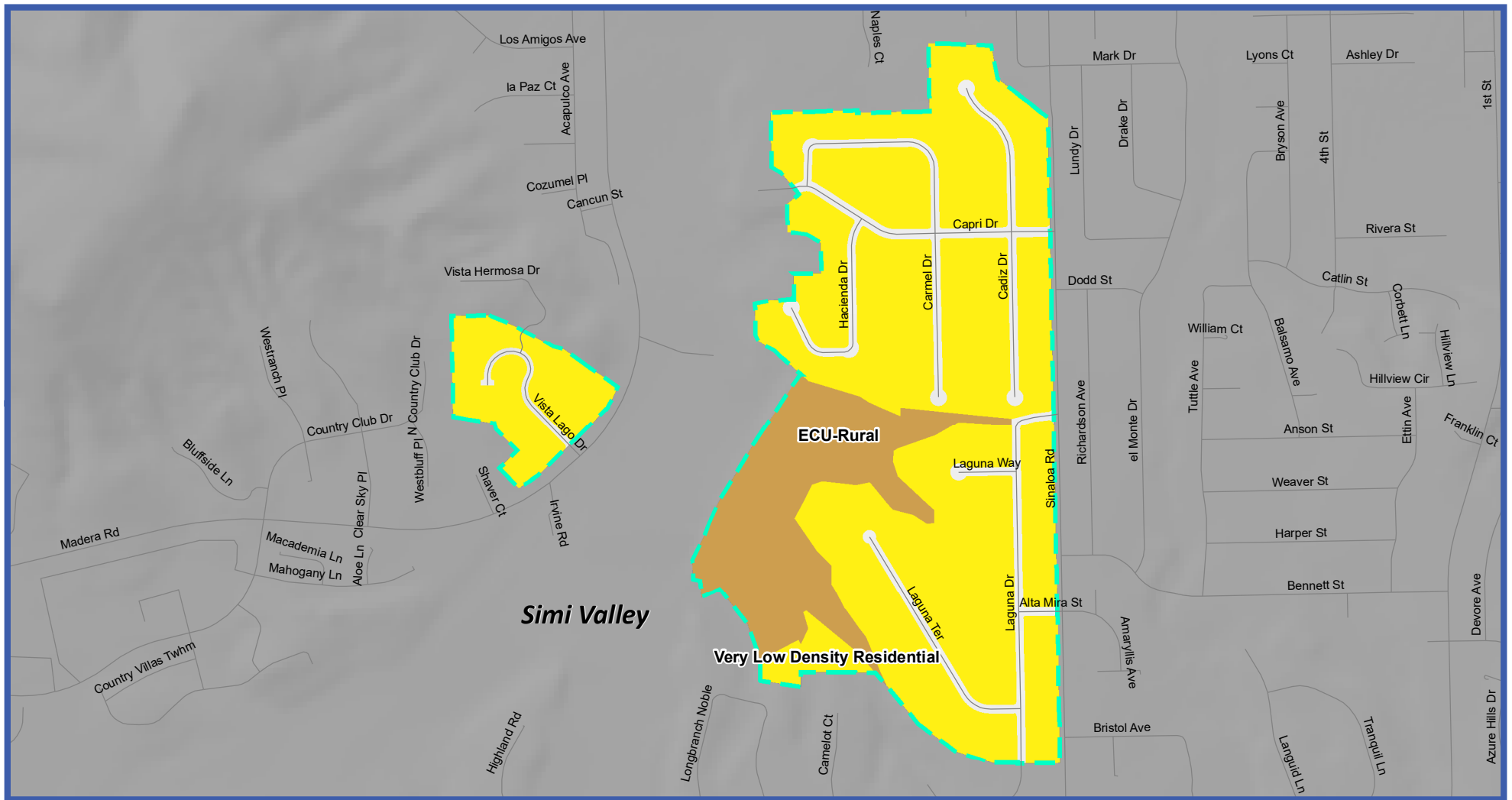
- Existing Community
- Coastal RPD
- Residential Beach
- Rural
- ECU-Rural

- Very Low Density Residential
- Low-Density Residential
- Medium-Density Residential
- High-Density Residential
- Residential PD
- Mixed Use
- Commercial

- Commercial PD
- Industrial
- Agricultural
- ECU-Agricultural
- Open Space
- ECU-Open Space
- State or Federal Facility







**Figure A-30:**  
General Plan  
Land Use Diagram  
West Simi

Map Date: August 28, 2019

Source: Ventura County Resource  
Management Agency GIS, 2019;  
Mintier Harnish, 2019

- Major Roadways
- Local Roads
- Major Waterways
- Cities

- Existing Community
- Coastal RPD
- Residential Beach
- Rural
- ECU-Rural

- Very Low Density Residential
- Low-Density Residential
- Medium-Density Residential
- High-Density Residential
- Residential PD
- Mixed Use
- Commercial

- Commercial PD
- Industrial
- Agricultural
- ECU-Agricultural
- Open Space
- ECU-Open Space
- State or Federal Facility

